

# Springwell Solar Farm

## Consultation Report

### Appendices D-1 to D-4

EN010149/APP/5.2  
November 2024  
Springwell Energyfarm Ltd

APFP Regulation 5(2)(q)  
Planning Act 2008  
Infrastructure Planning  
(Applications: Prescribed Forms  
and Procedure) Regulations 2009

## Table of Contents

**Appendix D-1 – Final SoCC**

**Appendix D-2 – Section 47 notice**

**Appendix D-3 – Screenshot of Springwell Solar Farm website with  
availability of the SoCC**

**Appendix D-4 – Compliance with the SoCC**

# Appendix D-1 – Final SoCC



# Springwell Solar Farm

Statement of Community Consultation  
Phase Two Consultation



# Table of Contents

<b>Table of Contents</b> .....	<b>1</b>
<b>1. Introduction</b> .....	<b>2</b>
1.2. Environmental Impact Assessment .....	3
1.3. More information .....	3
<b>2. Springwell Solar Farm</b> .....	<b>5</b>
2.1. About Springwell Solar Farm.....	5
2.2. About us.....	5
<b>3. Developing our approach to consultation</b> .....	<b>7</b>
<b>4. Consulting the community</b> .....	<b>9</b>
4.1. Our approach to statutory consultation.....	9
4.2. Timing .....	9
4.3. What will we consult on? .....	9
4.4. Who will we consult? .....	10
4.5. How will we consult? .....	12
4.6. Consultation information.....	12
4.7. Website and virtual exhibition.....	14
4.8. Public events.....	14
4.9. Presentations and stakeholder meetings.....	15
4.10. Publicity and advertising.....	15
4.11. Social media .....	15
4.12. Consultation hotline and email address.....	16
4.13. Collection of responses .....	16
4.14. Seldom heard audiences.....	16
<b>5. Consultation arrangements</b> .....	<b>18</b>
5.1. How to take part in the consultation.....	18
5.2. Responding to the consultation .....	18
5.3. How we will consider the responses.....	18
5.4. Further information.....	19

# 1. Introduction

- 1.1.1. Climate change is a challenge we must all play our part in addressing – from the small changes we need to make in our everyday lives to the transformational changes we need to make across our whole economy, including how we power our homes, businesses, and transport systems.
- 1.1.2. Over the next decade, the fossil fuels that once powered our economy need to be replaced with sources of low-carbon electricity. Solar is an important part of the way we can meet this challenge – it is affordable, reliable and can be built quickly.
- 1.1.3. Springwell Solar Farm ('Springwell') is a proposed new solar farm with battery storage located in North Kesteven. Backed by EDF Renewables and Luminous Energy, Springwell would make an important contribution to our future energy network by producing enough clean, secure and affordable energy to power over 180,000 homes every year\*.
- 1.1.4. Springwell is classed as a Nationally Significant Infrastructure Project ('NSIP') under the Planning Act 2008 because the amount of electricity it would generate is over 50 megawatts ('MW'). This means that a type of planning consent called a Development Consent Order ('DCO') is needed to build and operate it.
- 1.1.5. Unlike planning applications which are determined by local planning authorities, NSIP applications are submitted to and determined by the Secretary of State for Energy Security and Net Zeros.
- 1.1.6. Applying for a DCO is a fixed, legal process, which is illustrated in Figure 1. A key part of this process is the requirement for consultation with the local community and other stakeholders, including statutory consultees, before the DCO application is submitted. This is known as a 'statutory consultation.'
- 1.1.7. We held an initial stage of consultation (called a 'non-statutory consultation') between January and March 2023 on our early plans for Springwell. This was to introduce our early proposals for Springwell and gain feedback on them while they were still being developed.
- 1.1.8. The feedback we received from the community at this first stage, as well as the environmental surveys carried out since, have helped us to develop our plans to the extent that we are now ready to carry out our statutory consultation.
- 1.1.9. The feedback we receive at this stage will help inform our proposals for Springwell Solar Farm before we submit our DCO application.
- 1.1.10. Before we carry out this consultation, we must publish a statement of how we will consult with the local community – known as a Statement of Community Consultation ('SoCC'). This SoCC has been prepared and publicised in accordance with Section 47 of the Planning Act 2008, Regulation 12 of the Infrastructure Planning (Environmental Impact Assessment) Regulations 2017 and relevant guidance from the Planning Inspectorate (Planning Act 2008: Guidance on the pre-application process).

---

\* Based upon the average domestic electricity consumption per home (temperature corrected) per the Energy Consumption in the UK (published September 2021, Table C9 of ECUK: Consumption data tables)

- 1.1.11. It also reflects feedback we have received from the host local authorities for Springwell – North Kesteven District Council and Lincolnshire County Council – which we have consulted in the preparation of this document.
- 1.1.12. As part of our DCO application we will submit a Consultation Report, detailing how we have consulted, the feedback that we received during our statutory consultation and how we have had regard to it. When considering our DCO application, the Secretary of State must consider whether the consultation that we have undertaken has been adequate.
- 1.1.13. This SoCC sets out how we will consult with the local community. It includes:
- A brief summary of the Springwell Solar Farm proposal
  - When consultation will be carried out
  - Who will be consulted
  - Where people can find out more about Springwell Solar Farm
  - How we will consult (including on Preliminary Environmental Information)
  - How feedback will be collected and used to inform our proposals

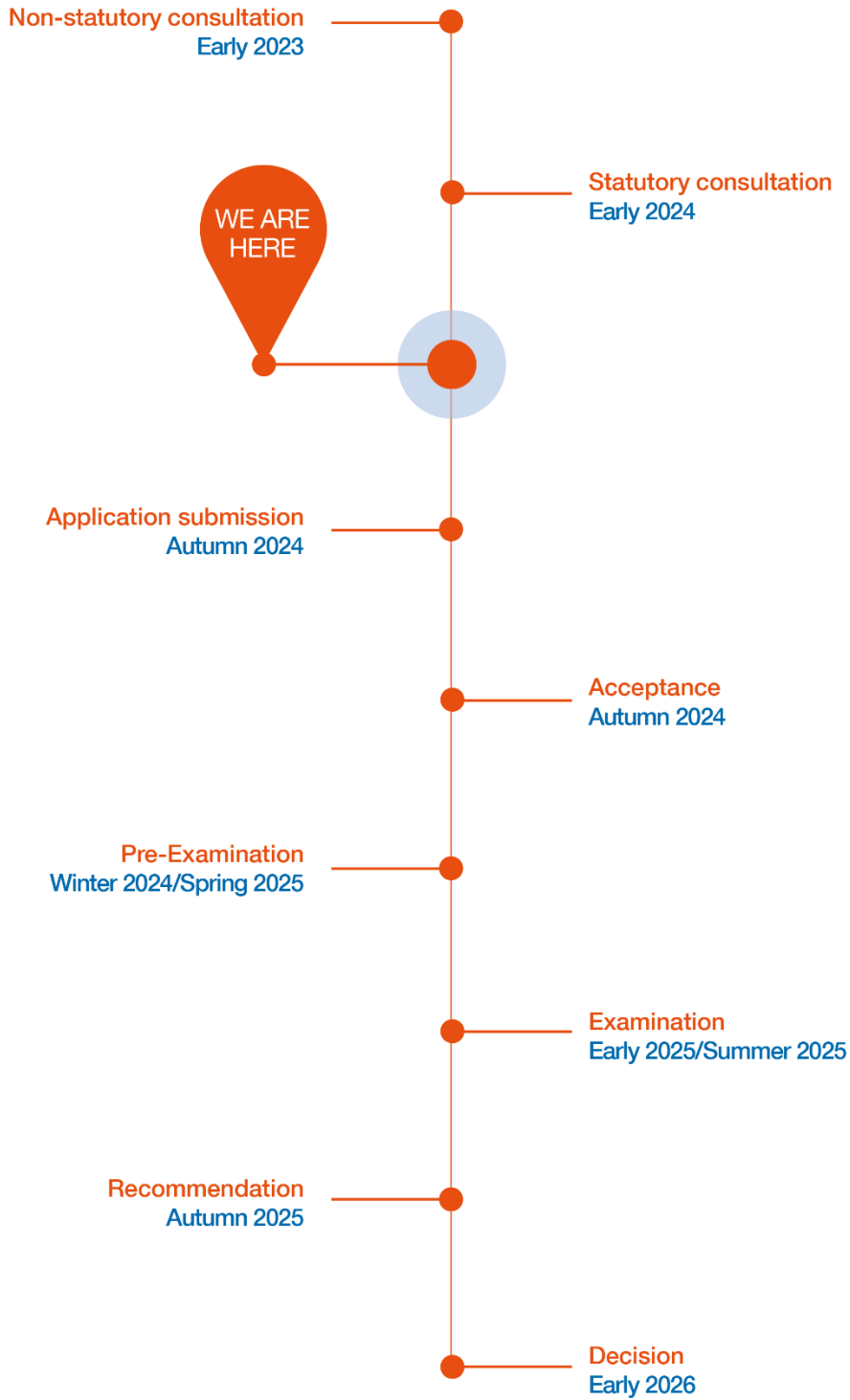
## 1.2. Environmental Impact Assessment

- 1.2.1. Springwell Solar Farm is classed as an Environmental Impact Assessment ('EIA') development requiring an assessment of its likely significant effects on the environment under The Infrastructure Planning (Environmental Impact Assessment) Regulations 2017. Where appropriate, we will also describe mitigation that is proposed to avoid, reduce, or mitigate any significant adverse effects. We will report on this process in a document called an Environmental Statement ('ES') when we submit our DCO application.
- 1.2.2. At the statutory consultation, we will be sharing the initial results of our ongoing environmental assessments as well as preliminary information on mitigation measures that we may need to introduce to avoid, prevent, reduce or, if possible, offset any likely significant adverse effects. We will do so in a Preliminary Environmental Information Report ('PEIR') document.

## 1.3. More information

- 1.3.1. You can find more information about the Planning Act 2008, the Planning Inspectorate and its role, as well as how to participate in the DCO process on the Planning Inspectorate's National Infrastructure Planning website <https://infrastructure.planninginspectorate.gov.uk/>, or by calling the Planning Inspectorate on 0303 444 5000.

Figure 1: Planning process for NSIPs and indicative timescales for Springwell





## 2. Springwell Solar Farm

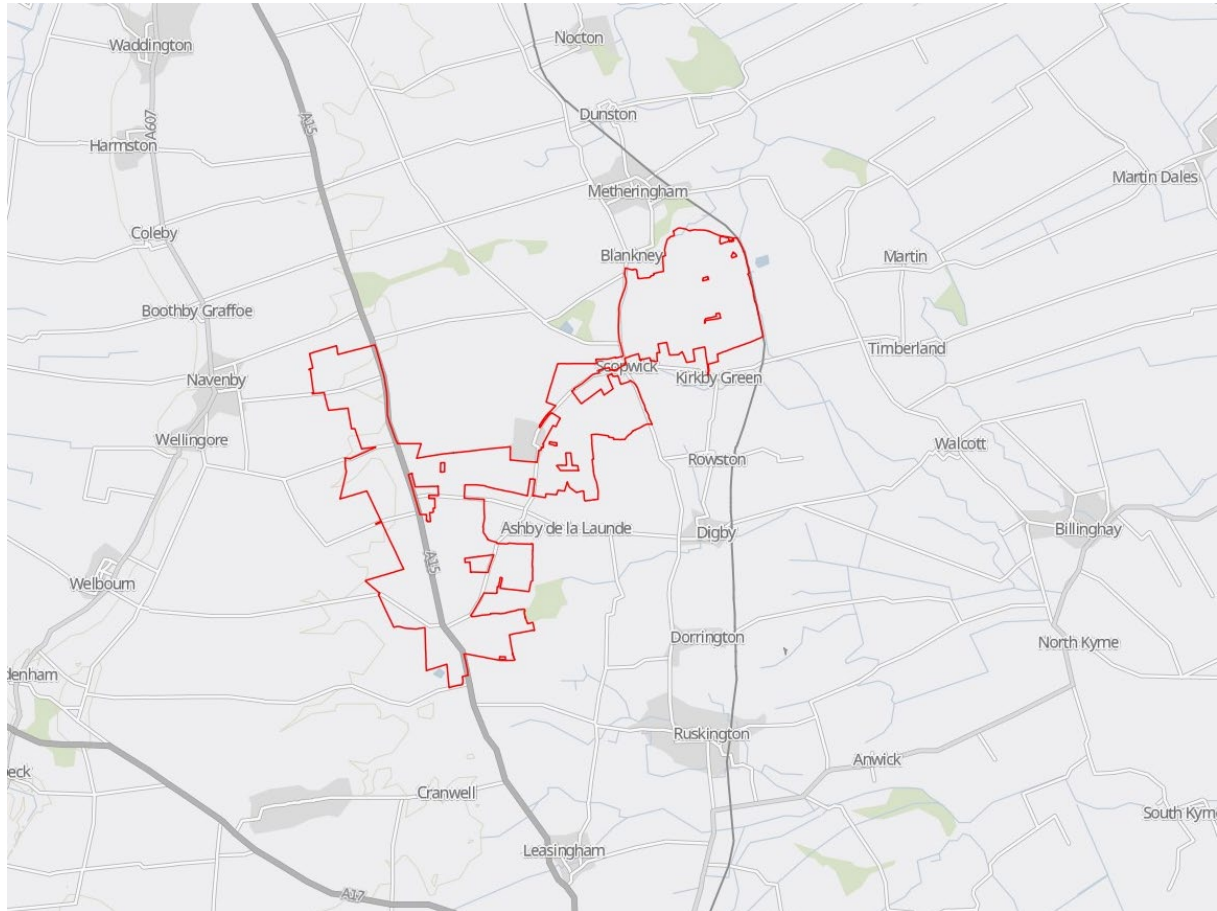
### 2.1. About Springwell Solar Farm

- 2.1.1. Springwell Solar Farm is a proposed new solar energy farm with battery storage. The proposals also include infrastructure to connect Springwell Solar Farm to the National Grid and any necessary supporting site infrastructure and environmental mitigation, including landscaping.
- 2.1.2. It is located in the local authority areas of North Kesteven District Council and Lincolnshire County Council (the host authorities). Figure 2 shows the location of the proposed Springwell Solar Farm.
- 2.1.3. We have secured a grid connection agreement with National Grid which would allow us to export up to 800MW of clean, secure and affordable electricity to this network, through a new substation owned by National Grid. There would also be capacity to import power from the network.
- 2.1.4. Further details of the proposed Springwell Solar Farm will be included in materials published during the consultation. Details of the materials we will publish are in the 'How we will consult' section below.
- 2.1.5. More information can also be found on our project website: [www.springwellsolarfarm.co.uk](http://www.springwellsolarfarm.co.uk).

### 2.2. About us

- 2.2.1. Springwell Solar Farm is backed by Springwell Energyfarm Ltd - a joint venture between EDF Renewables and Luminous Energy.
- 2.2.2. EDF Renewables has over 25 years' experience delivering renewable energy projects in more than 20 countries worldwide. In the UK, it has 41 operating sites providing much needed affordable, low carbon electricity across all renewable technologies.
- 2.2.3. Luminous Energy is an established UK-based renewable energy developer with projects in the UK, US, Chile and Australia. The company was set up in 2013 to provide people around the world with affordable, renewable energy. Luminous Energy is now regarded as a leading player in the market, having delivered 1GW of projects globally, and the company's core values remain firmly at the heart of the business.
- 2.2.4. You can find out more about both organisations at: [www.edf-re.uk](http://www.edf-re.uk) and [www.luminous.energy](http://www.luminous.energy)

Figure 2: Location of Springwell Solar Farm



*This is the proposed location of Springwell Solar Farm. Since the previous stage of consultation our red line boundary has changed to accommodate an underground cable corridor, to allow Springwell to connect into the National Grid.*

### 3. Developing our approach to consultation

- 3.1.1. Our approach to consultation has been informed by our early engagement with key stakeholders, as well as our phase one consultation.
- 3.1.2. The phase one consultation was held between 24 January 2023 and 7 March 2023 to introduce our proposals and gain initial feedback on them, including our early design for Springwell Solar Farm, our approach to assessing environmental effects, and community benefit.
- 3.1.3. We presented materials in a range of different formats to ensure that everyone with an interest in our plans could find out more and share their feedback.
- 3.1.4. This included:
  - Sending a newsletter to 3,126 local addresses around the proposed site.
  - Holding four in-person events.
  - Hosting a virtual exhibition on our project website.
  - Publishing a consultation booklet and questionnaire, which were available online, at public events, in hard copy at local community buildings and on request.
  - Offering to meet with stakeholders, community organisations and close neighbours to discuss our proposals.
- 3.1.5. Feedback options included completing the hard-copy questionnaire and returning it at our public events or via our Freepost address, completing the online questionnaire accessed through our project website and virtual exhibition, emailing us, or writing to us using our Freepost address.
- 3.1.6. Anyone could get in touch with the consultation team via email, Freepost and our freephone to find out more about our proposals and ask the team questions.
- 3.1.7. Feedback from this consultation has helped us refine our proposals and our ongoing approach to consultation and engagement. For example, we received feedback on the timings of our public events (to go past 7pm to accommodate different working schedules) and on the content that should be included at the next stage of consultation – such as visualisations of the proposals. This has informed our approach, which is set out in more detail in Chapter 4.
- 3.1.8. We have continued to engage with the community and stakeholders since the consultation. The key activities, detailed in Table 1, reflect our intention to keep the community informed and engaged as our plans for Springwell evolve.

Table 1: On-going engagement following non-statutory consultation

Activity	Summary
Near neighbour engagement	<ul style="list-style-type: none"> <li>We sought to conduct a Residential Visual Amenity Assessment (RVAA) at 49 properties around the proposed Springwell site.</li> <li>Following the completion of the RVAA, we invited the residents of these properties to a workshop with members of the project team to show them how our design is evolving to consider the results of our surveys - including the RVAA – as well as the feedback we received from the non-statutory consultation.</li> <li>We have continued to accommodate requests for site visits and meetings from near neighbours where practicable.</li> </ul>
Wider community engagement	<ul style="list-style-type: none"> <li>We have created an on-site surveys page on our project website to ensure that the community is being kept up to date with on-site activity: <a href="http://www.springwellsolarfarm.co.uk/category/surveys">www.springwellsolarfarm.co.uk/category/surveys</a>.</li> <li>We have written to residents to give advance notice where survey work has been expected to be disruptive.</li> <li>We have offered and held meetings with community organisations and representatives, including ward councillors, primary schools, the local MP, landowners, and local businesses. We have also held meetings with residents on request.</li> <li>We are continuing to answer enquiries through our communication channels.</li> </ul>
Engagement with host authorities	<ul style="list-style-type: none"> <li>We have continued to hold regular meetings with host local planning authorities since the close of our non-statutory consultation. The purpose of these meetings is to share updates on Springwell Solar Farm, including discussions on our approach to consultation and engagement.</li> </ul>
Engagement with statutory consultees	<ul style="list-style-type: none"> <li>We have offered and held meetings with statutory/technical consultees to assist with the EIA process and the evolution of our design. This includes relevant statutory bodies such as Lincolnshire Wildlife Trust, Natural England, Environment Agency, Lincolnshire Fire &amp; Rescue Services and Historic England.</li> </ul>

## 4. Consulting the community

### 4.1. Our approach to statutory consultation

- 4.1.1. Our statutory consultation will be open to anyone with an interest in Springwell Solar Farm who considers that they may be directly, or indirectly affected by the proposals, or has a view that they would like to be considered.
- 4.1.2. Our multi-stage approach to consultation has ensured that community input has already helped to shape the plans we are presenting. The feedback that we receive from this stage of consultation will help us to further refine our proposals and inform our assessments before we submit our DCO application.
- 4.1.3. We are committed to making sure that everybody has the opportunity to understand and provide their feedback on our proposals for Springwell Solar Farm. Our key objectives for achieving this through our pre-application consultation include:
- Ensuring thorough, open, and transparent engagement and consultation on our proposals.
  - Ensuring proposals are clearly presented, and issues easily understood.
  - Providing sufficient opportunities for interested parties to understand and influence our plans.
  - Gathering high quality responses to, and feedback on, our plans to help inform proposals.
  - Delivering consultation that meets the legal requirements and best practice for a DCO application.

### 4.2. Timing

- 4.2.1. The statutory consultation will run for six weeks, between Thursday 11 January – Thursday 22 February 2024. All responses must be received by 11:59pm on Thursday 22 February 2024.

### 4.3. What will we consult on?

- 4.3.1. During the statutory consultation, we will be asking for views on:
- The proposals for Springwell Solar Farm, including the preferred locations of each of its elements and our proposed environmental enhancements and mitigation.
  - The PEIR, which will present an initial account of the likely significant environmental effects of Springwell Solar Farm during construction, operation and decommissioning, as well as preliminary details on mitigation measures that we may need to introduce to avoid, prevent, reduce or, if possible, offset any potentially significant adverse effects.
  - How Springwell Solar Farm could contribute to the local community, including the development of a community benefit package.

## 4.4. Who will we consult?

- 4.4.1. We have defined two geographic zones – an inner zone and an outer zone - for the purpose of consulting with the local community. This recognises the fact that levels of potential impact are likely to vary with distance to the site. These zones have informed how we will publicise the consultation and are set out below, with further detail about the consultation information detailed in section 4.6.
- 4.4.2. We will publicise the consultation in both zones using our project website, by placing adverts in local newspapers and on social media, and by issuing press releases to local media outlets.

### Inner zone

- 4.4.3. The inner zone covers people who live and work close to the proposed Springwell Solar Farm who are likely to be directly affected by the proposals and their political representatives. Our consultation activity will be most intensive within this zone.
- 4.4.4. This zone includes all residential properties within two kilometres of the proposed site boundary, extending in some areas to consider the potential wider effects of the proposal and human geographic boundaries e.g., ensuring all homes within a settlement have been included. A map of this zone is shown in Figure 3.
- 4.4.5. A newsletter will be sent to all homes and businesses within the inner zone at the beginning of consultation. Where possible, it is intended that public events and deposit points will be focused in or close to this area.
- 4.4.6. We will write to political representatives and community groups within this zone to offer them a briefing and support them to promote the consultation using their existing communication channels.

### Outer zone

- 4.4.7. The outer zone covers those living and working in the area outside of the inner zone, who may be affected by or have an interest in our proposals due to the proposals being brought forward in their local authority. This zone follows the local authority boundary of North Kesteven District Council.
- 4.4.8. As well as the methods set out in section 4.4.2, we will write to district and county political representatives within this zone to support them to promote the consultation using their existing communication channels.

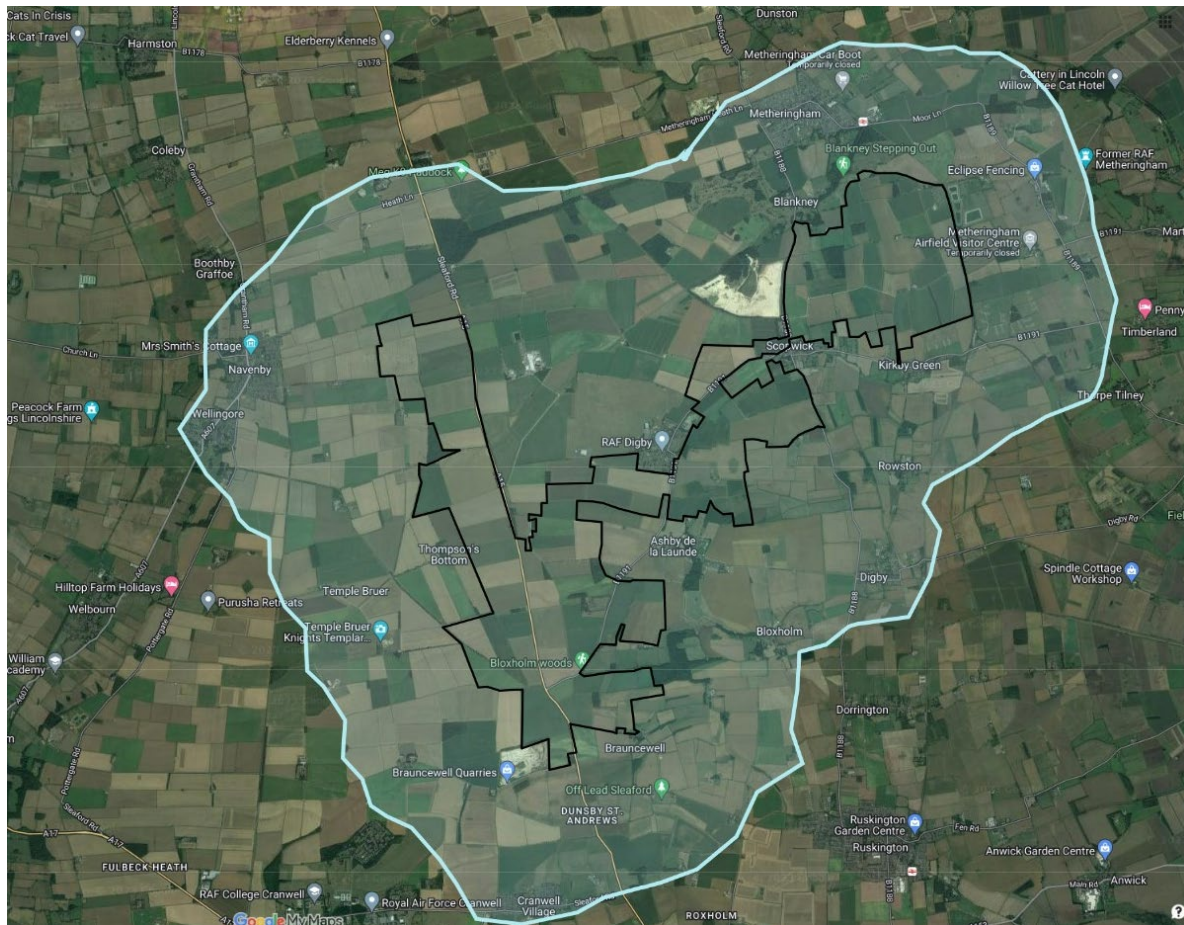
### Statutory consultees and community organisations

- 4.4.9. At the same time as consulting the local community, we will also consult a range of statutory consultees as set out by Section 42 and Section 48 of the Planning Act 2008 and Regulation 13 of the Infrastructure Planning (Environmental Impact Assessment) Regulations 2017, and additional organisations that we recognise to have an interest in the proposed Springwell Solar Farm. These groups include:
- The host and neighbouring local authorities.
  - Statutory bodies (such as the Environment Agency, Historic England, Natural England and others).

- Other community groups and organisations that may have an interest in the proposals (such as Lincolnshire Wildlife Trust, Lincolnshire Ramblers and others).
- People with an interest in land (e.g., owners or tenants) that may be affected by the proposals.

4.4.10. The proposed application will also be publicised as required by Section 48 of the Planning Act 2008.

Figure 3: Inner zone. The location of the site is shown in black.



## 4.5. How will we consult?

- 4.5.1. This section sets out how we intend to consult during the consultation, which will be open between Thursday 11 January and 11:59pm on Thursday 22 February 2024.
- 4.5.2. We will present information in a variety of formats and enable feedback to be provided in a number of ways to encourage participation in the consultation. More detail on the consultation techniques we will use is provided sections 4.7-4.14.
- 4.5.3. Should we carry out any further stages of consultation prior to submission of the DCO application, we will use some, but not necessarily all, of the means of consultation set out in this document. We will work with the host authorities to assist us in deciding the most appropriate activities for any further stages of consultation.

## 4.6. Consultation information

- 4.6.1. Information about our proposals will be published for consultation in the following formats:
- **A consultation newsletter:** a newsletter issued to addresses within the inner zone setting out how to find out more about the proposals and participate in the consultation; including information on accessing materials, the locations and timings of the public events, and how people can share their feedback. This will additionally be published on the project website to view and download.
  - **A consultation booklet:** an accessible summary of our proposals for Springwell Solar Farm, the EIA process, the consultation and planning process, approach to community benefit and next steps. This will be available in hard copy at deposit points and the public events, posted on request, and published on the project website to view and download.
  - **A questionnaire:** the main way we will collect feedback from the community. It will include easy to understand questions on our proposals, the answers to which will be considered as we refine our plans. This will be available in hard copy at deposit points and the public events, posted on request and published on the project website to view and download.
  - **A 3D model:** a virtual model of the proposed Springwell Solar Farm site available at the public events.
  - **A website:** the project website ([www.springwellsolarfarm.co.uk](http://www.springwellsolarfarm.co.uk)) will host all of the consultation documents, including the PEIR, as well as links to the virtual exhibition and online questionnaire. It will also include details of the deposit points and public events as well as hosting contact information for people to get in touch with the team.
  - **A virtual exhibition:** containing the exhibition banners on display at the public events and a link to the online questionnaire and project website. It will host contact information for people to get in touch with the team.
  - **Exhibition banners:** an accessible summary of our proposals for Springwell Solar Farm, the EIA process, the consultation and planning process, approach to community benefit and next steps which will be displayed at the public



events. The exhibition banners will also be available in the virtual exhibition and as PDFs to download from the project website.

- **The Preliminary Environment Information Report (PEIR):** containing the initial results of our ongoing environmental assessments as well as preliminary information on measures to avoid, prevent, reduce or, if possible, offset any likely significant adverse effects.
- 4.6.2. Printed copies of the SoCC and consultation documents – including the PEIR - will be available in local libraries and community venues ('deposit points') close to the proposed site for Springwell Solar Farm and maintained throughout the consultation period. USBs containing all of these documents will also be available to take away. All materials will be published on the project website ([www.springwellsolarfarm.co.uk](http://www.springwellsolarfarm.co.uk)).
- 4.6.3. Deposit points have been selected to ensure they are close to or within the inner zone, are accessible and have opening times to accommodate people with different time commitments.
- 4.6.4. The locations of the deposit points, which are listed in Table 2 below, will be publicised in the consultation material, including the newsletter, consultation booklet and on the project website.
- 4.6.5. We will provide hard copies of the consultation booklet, questionnaire and SoCC free of charge on request – as well as USBs containing all of the consultation materials (including the PEIR). We will review requests for hard copies of the PEIR on a case-by-case basis. A fee to cover printing costs (up to a maximum of £750 for one full set of consultation documents) may be charged to the recipient.
- 4.6.6. Requests for consultation information in alternative formats (e.g., in different languages, large print or easy access) will be considered on a case-by-case basis so we can establish how best to provide the information required.

**Table 2: Deposit points**

Location	Opening hours*
<b>Sleaford Library, 13 - 16 Market Place, Sleaford NG34 7SR</b>	Monday: 9 am–5 pm Tuesday: 9 am–5 pm Wednesday: 9 am–5 pm Thursday: 9 am–6 pm Friday: 9 am–5 pm Saturday: 9 am–1 pm Sunday: Closed
<b>The Venue, Grantham Road, Navenby LN5 0JJ</b>	Opening times may vary, please contact venue ( <a href="mailto:venueavenby@gmail.com">venueavenby@gmail.com</a> ) / 07505 145061) to arrange access. Monday: 9am – 6pm Tuesday: 9am – 6pm

Wednesday: 9am – 6pm  
Thursday: 9am – 6pm  
Friday: opening times may vary.  
Saturday: opening times may vary.  
Sunday: opening times may vary.

*\*please check opening times before travelling*

#### 4.7. Website and virtual exhibition

- 4.7.1. From the start of consultation, the project website ([www.springwellsolarfarm.co.uk](http://www.springwellsolarfarm.co.uk)) will host all of the consultation documents, including the PEIR, as well as links to the virtual exhibition and online questionnaire. It will also include details of the deposit points and public events as well as hosting contact information for people to get in touch with the team.
- 4.7.2. The interactive virtual exhibition will be accessed through the website and will provide an alternative format for people to learn about the proposals. It will include information boards which will be on display at the public events, links to documents and the online questionnaire.

#### 4.8. Public events

- 4.8.1. We will hold in-person public events during the consultation period to enable anyone with an interest in the proposals to find out more about them and ask questions to members of the team. Printed copies of the consultation booklet, SoCC and questionnaire will be available at these events for members of the public to take away. Completed questionnaires will be able to be returned at the events.
- 4.8.2. The dates and times of these events are listed in Table 3 below. The events are being held in accessible venues around the proposed Springwell site and have been organised at a range of dates and times to ensure that people with different schedules are able to attend. This includes events after normal working hours as well as weekend events.
- 4.8.3. Details about the dates and times of the public events will be published on the project website and in the consultation newsletter and booklet. The schedule will also be included on supporting publicity such as newspaper and social media adverts. We will consider requests for additional events throughout the consultation period on a case-by-case basis. Any further events would be publicised on the project website, using social media adverts and if possible, at the venue.

**Table 3: Public events**

<b>Location</b>	<b>Date and time</b>
<b>Scopwick Village Hall, Brookside, Scopwick, LN4 3PA</b>	Wednesday 24 January 4pm-8pm
<b>Ashby de la Launde Village Hall, Church Avenue, Ashby de la Launde, LN4 3JQ</b>	Thursday 25 January 3pm-7pm
<b>The Venue, Grantham Road, Navenby, LN5 0JJ</b>	Friday 26 January 12pm-4pm
<b>Metheringham Village Hall, Fen Road, Metheringham, LN4 3AA</b>	Saturday 27 January 11am-3pm
<b>Blankney Old School, Drury St, Blankney, LN4 3AZ</b>	Tuesday 20 February 3pm-7pm

#### 4.9. Presentations and stakeholder meetings

- 4.9.1. We will seek to accommodate reasonable requests for presentations and briefings from stakeholder groups, for example: local authorities, parish councils, and local community groups, during the consultation period.
- 4.9.2. Other activities will be carried out, if considered necessary and appropriate, to engage specific interests or seldom heard groups. This could include, for example, further meetings with residents who are closest to the proposed site.
- 4.9.3. Details of all our consultation activity will be included in a Consultation Report which we will submit as part of our DCO application.

#### 4.10. Publicity and advertising

- 4.10.1. We will publicise the consultation and associated activities in local media ahead of the start of the consultation period and will update local broadcast and print media channels on our activity during the consultation.
- 4.10.2. Where publication timings allow, we will seek to use local newsletters to further engage with local communities.
- 4.10.3. Statutory notices will be published in line with Section 47 and Section 48 of the Planning Act.

#### 4.11. Social media

- 4.11.1. We will use social media to help publicise the consultation and encourage those with an interest in our proposals to get involved. We are unable to accept feedback via social media.

## 4.12. Consultation hotline and email address

- 4.12.1. To find out more information or request copies of the consultation materials, anyone can contact the consultation team by freephone (0800 038 3486) during normal business hours (Monday to Friday, 9am to 5:30pm). Outside of these hours, callers will be able to leave a message requesting a callback.
- 4.12.2. Alternatively, people can email [info@springwellsolarfarm.co.uk](mailto:info@springwellsolarfarm.co.uk) or write to the team via Freepost (no stamp required): Springwell Solar Farm, FREEPOST SEC Newgate UK LOCAL.

## 4.13. Collection of responses

- 4.13.1. We will produce a questionnaire inviting feedback on different elements of the proposed Springwell Solar Farm. The questionnaire will be available to download on the project website: [www.springwellsolarfarm.co.uk](http://www.springwellsolarfarm.co.uk), in hard-copy at public events, at deposit points around the local area and on request using the project contact details.
- 4.13.2. The completed hard-copy questionnaire can be returned using the Freepost address set out in this document during the consultation period, or at the public events.
- 4.13.3. Respondents will also be able to complete the questionnaire online, which will be made available through the project website: [www.springwellsolarfarm.co.uk](http://www.springwellsolarfarm.co.uk) as well as the virtual exhibition.
- 4.13.4. Alternatively, respondents can write to us via email or Freepost using the details set out in this document. All written feedback will be accepted.

## 4.14. Seldom heard audiences

- 4.14.1. It is important to ensure that everyone with an interest in the proposals has the opportunity to comment on our proposals as part of the consultation. We want our consultation to be inclusive and gather feedback from a wide range of audiences, including those who are seldom heard in public consultations such as people without internet access, seasonal workers, younger people and socially isolated people. We will do this by:
- Writing to local authorities and organisations representing seldom heard individuals and groups to ensure our consultation activity and materials are appropriate and remove barriers to engagement.
  - Choosing accessible venues for deposit points and public events.
  - Publicising the consultation in digital editions of local newspapers and on social media.
  - Holding public events at a variety of times, including evenings and weekends to enable participation by people with different time commitments.
  - Making provision for people without internet access through the consultation programme. This includes sending a consultation newsletter to every address within the inner zone, holding public events in the area, publicising the consultation in print editions of local newspapers and making hard copies of consultation materials available on-request and at deposit points.

- Providing materials in alternative formats on request (e.g. different languages, large-print or easy read). Contact details to request materials in alternative formats will be published on the project website and in our consultation booklet and newsletter.
- Writing to identified organisations representing seldom heard individuals and groups in both the inner and outer zone at the start of consultation to support them in promoting the consultation through their own existing communication channels, such as social media feeds.
- Contacting community and voluntary organisations including parish councils and schools within the inner zone to offer direct engagement.
- Providing a variety of communication channels including a freephone number, email address and Freepost for those seeking further information.

## 5. Consultation arrangements

### 5.1. How to take part in the consultation

5.1.1. Anyone can find out more by:

- Contacting us on 0800 038 3486 or [info@springwellsolarfarm.co.uk](mailto:info@springwellsolarfarm.co.uk) or by writing to the Freepost address (Springwell Solar Farm, FREEPOST SEC Newgate UK LOCAL).
- Attending a public event which we will hold in locations around the proposed Springwell site.
- Viewing the virtual exhibition on our website: [www.springwellsolarfarm.co.uk/](http://www.springwellsolarfarm.co.uk/)
- Reading the consultation booklet which will be available online or in hard copy on request, at deposit points around the area and at the public events.
- Reviewing the PEIR by going to [www.springwellsolarfarm.co.uk](http://www.springwellsolarfarm.co.uk) or visiting a deposit point.

### 5.2. Responding to the consultation

5.2.1. We welcome feedback on our proposals for Springwell Solar Farm. Anyone can share their views by:

- Completing the consultation questionnaire online at [www.springwellsolarfarm.co.uk](http://www.springwellsolarfarm.co.uk).
- Returning a questionnaire by Freepost (no stamp required) to the following address: Springwell Solar Farm, FREEPOST SEC Newgate UK LOCAL.
- Returning a questionnaire by email: [info@springwellsolarfarm.co.uk](mailto:info@springwellsolarfarm.co.uk).
- Submitting comments by email to [info@springwellsolarfarm.co.uk](mailto:info@springwellsolarfarm.co.uk) or in writing to the above Freepost address.

5.2.2. Responses must be received by the consultation deadline of 23:59 on Thursday 22 February 2024.

5.2.3. Responses must be individual. Petitions will be treated as a single response for the purpose of the Consultation Report.

### 5.3. How we will consider the responses

5.3.1. Following this consultation, we will consider all of the feedback we receive as we continue refining our proposals for Springwell Solar Farm before submitting a DCO application. The DCO application will include a Consultation Report, which will set out how we have consulted, summarise the responses received and explain how we have had regard to them.

5.3.2. Any comments received will be analysed by Springwell Energyfarm Ltd and any of its appointed agents. Copies may be made available to the Secretary of State, the Planning Inspectorate and other relevant statutory authorities so that feedback can be considered part of the DCO process. We will request that any personal details are not placed on the public record and will be held securely by Springwell Energyfarm Ltd and its agents in accordance with the data protection

law. Any personal details will be used solely in connection with the consultation process and subsequent DCO application and, except as noted above, will not be passed to third parties.

- 5.3.3. The Planning Inspectorate has also published details of how it manages comments received in a Privacy Notice available on its website:  
<https://www.gov.uk/government/publications/planning-inspectorate-privacy-notices/customer-privacy-notice>.

## 5.4. Further information

- 5.4.1. For further information, please contact us by:
- Calling 0800 038 3486 (9:00am to 5:30pm, Monday to Friday)
  - Emailing [info@springwellsolarfarm.co.uk](mailto:info@springwellsolarfarm.co.uk)
  - Writing to the team at Springwell Solar Farm FREEPOST SEC Newgate UK Local



[springwellsolarfarm.co.uk](http://springwellsolarfarm.co.uk)



# Appendix D-2 – Section 47 notice



Lincolnshire Echo (Thursday 14 December 2023)

Trusted news since 1893

# Lincolnshire Echo




www.lincolnshirelive.co.uk   InYourArea.co.uk   Thursday, December 14 - Wednesday, December 20, 2023   £2.30

**GOLDING YOUNG**  
House Clearance  
Valuations & Auctions



01522 524984  
lincoln@goldingyoung.com  
goldingyoung.com



## £10 OFF

N°7 AT Boots

WHEN YOU SPEND £20 PAGE 4

Voucher required. Terms and exclusions apply.

# MISSING OUT ON MARKET VISITORS



PHOTO: lincoln-christmasmarket.co.uk

**TRADERS CALL FOR FESTIVE FAVOURITE'S RETURN DESPITE BUSY WEEKEND - PAGES 6 & 7**

## GOLDING YOUNG & MAWER 1864

CHARTERED AUCTIONEERS & VALUERS ♦ ARTS & ANTIQUES SURVEYORS

E: lincoln@goldingyoung.com   T: 01522 524984   W: www.goldingyoung.com




# Public Notices

## Statutory

### Springwell Solar Farm

Section 47(6) Planning Act 2008 - Springwell Solar Farm  
Notice of Publication of Statement of Community Consultation  
Notice is hereby given that Springwell Energyfarm Ltd (13484004) of Alexander House, 1 Mandarin Road, Rainon Bridge Business Park, Houghton le Spring, DH4 5RA (the "Applicant") has produced a Statement of Community Consultation ("SoCC") in accordance with Section 47 of the Planning Act 2008. The SoCC has been prepared in response to a proposed application (the "Application") under section 37 of the Planning Act 2008 to the Secretary of State for Energy Security and Net Zero for a Development Consent Order ("DCO").

Springwell Solar Farm would comprise the construction, operation and maintenance, and decommissioning of a ground-mounted solar photovoltaic ("PV") array electricity generating facility and battery storage facility with a total capacity exceeding 50 megawatts ("MW") and import/export connection to the National Electricity Transmission System ("the Proposed Development"). The Proposed Development would be located on approximately 1,972 hectares of land within the administrative boundary of North Kesteven District Council and Lincolnshire County Council, close to the settlements of Blankney, Scopwick, Kirkby Green and Ashby de la Launde ("the Proposed Site").

- The DCO would, amongst other things, authorise:
- construction, operation and decommissioning of ground mounted solar PV arrays, Balance of Solar System, Collector Compounds and Battery Energy Storage System, along with distribution cables.
  - other associated and ancillary works including a new substation, known as Springwell Substation, which would be connected to the PV arrays and battery storage via distribution cables. Underground cabling would connect the Springwell Substation to the point of connection into the National Electricity Transmission System via a 400kV grid connection cable route.
  - other infrastructure works including on-site cabling, ancillary buildings such as offices and welfare areas, access tracks, and any other works identified as necessary to enable the Proposed Development. There would also be parts of the Proposed Site used for landscaping which would include features such as biodiversity mitigation and enhancement measures, amenity improvements and fencing.
  - the compulsory acquisition of land and/or rights and the taking of temporary possession of land.
  - the overending of easements and other rights over or affecting land.
  - the application and/or discontinuation of legislation relating to the Proposed Development.
  - such ancillary, incidental and consequential provisions, licences, property rights, permits and consents as are necessary and/or convenient.

As the Proposed Development would generate in excess of 50MW of electrical capacity, it is classed as a Nationally Significant Infrastructure Project under the Planning Act 2008. Accordingly, the Applicant must apply to the Secretary of State for a DCO under the Planning Act 2008.

The Applicant will shortly commence pre-application consultation on the Proposed Development which will run between **Thursday 11 January 2024 and 11:59pm on Thursday 22 February 2024**. The purpose of this consultation is to obtain views on the Proposed Development ahead of submission of the DCO application.

The Proposed Development is an Environmental Impact Assessment ("EIA") development and accordingly a Preliminary Environmental Information Report ("PEIR") has been produced and is included as part of the consultation materials. The PEIR sets out the preliminary environmental information on the Proposed Development. The Applicant is carrying out an EIA and will submit an Environmental Statement as part of its DCO application.

The Applicant has produced a Statement of Community Consultation ("SoCC") in accordance with section 47 of the Planning Act 2008 which explains how the Applicant will consult with the local community and stakeholders about the Proposed Development. The SoCC can be viewed free of charge at [www.springwellsolarfarm.co.uk/downloads](http://www.springwellsolarfarm.co.uk/downloads), or at the deposit locations set out below from **Monday 11 December 2023**. The consultation will be carried out in accordance with the SoCC.

Location	Opening hours*
Steford Library, 13 - 16 Market Place, Steford NG34 7SR	Monday: 9am-5pm Tuesday: 9am-5pm Wednesday: 9am-5pm Thursday: 9am-6pm Friday: 9am-5pm Saturday: 9am-1pm Sunday: Closed
The Venue, Grantham Road, Navenby LN5 0JJ	Opening times may vary, please contact venue ( <a href="mailto:venueavenby@gmail.com">venueavenby@gmail.com</a> / 07505 145061) to arrange access. Monday: 9am-6pm Tuesday: 9am-6pm Wednesday: 9am-6pm Thursday: 9am-6pm Friday: opening times may vary. Saturday: opening times may vary. Sunday: opening times may vary.

\*Please check opening times before travelling  
In addition, the consultation materials (including the PEIR) can be viewed online at [www.springwellsolarfarm.co.uk/downloads](http://www.springwellsolarfarm.co.uk/downloads) and the above in person locations from the start of consultation period (11 January 2024).

Copies of the consultation materials are also available on USB or in hard copy on request to the Applicant from the start of the consultation period. The Applicant will provide USBs containing all the consultation materials - including the PEIR - free of charge. Hard copies of the consultation booklet, SoCC and questionnaire will be available free of charge. Requests for hard copies of the PEIR will be reviewed on a case-by-case basis. A fee to cover printing costs (up to a maximum of £750 for one full set of consultation documents) may be charged to the recipient. Materials in an alternate format can be requested using the contact information below.

In addition, the Applicant is hosting a number of public events at the following dates and locations to enable people to find out more about the Proposed Development and share their feedback:

Location	Date and time
Scopwick Village Hall, Brookside, Scopwick, LN4 3PA	Wednesday 24 January (4pm-8pm)
Ashby de la Launde Village Hall, Church Avenue, Ashby de la Launde, LN4 3JQ	Thursday 25 January 3pm-7pm
The Venue, Grantham Road, Navenby, LN5 0JJ	Friday 26 January 12pm-4pm
Metheringham Village Hall, Fen Road, Metheringham, LN4 3AA	Saturday 27 January 11am-3pm
Blankney Old School, Drury St, Blankney, LN4 5AZ	Tuesday 20 February 3pm-7pm

You can provide your feedback to us by the deadline of 11:59pm on Thursday 22 February 2024 through any of the following ways:

- Completing the consultation questionnaire online at [www.springwellsolarfarm.co.uk](http://www.springwellsolarfarm.co.uk).
- Returning a questionnaire by Freepost (no stamp required) to the following address: Springwell Solar Farm, FREPOST SEC Heygate UK LOCAL.
- Returning a questionnaire by email: [info@springwellsolarfarm.co.uk](mailto:info@springwellsolarfarm.co.uk)
- Submitting comments by email to [info@springwellsolarfarm.co.uk](mailto:info@springwellsolarfarm.co.uk) or in writing to the above Freepost address.

For more information on the consultation, to request copies of documents and USBs, or to arrange to speak to a member of the team, people can contact us by calling 0800 036 3406 (Monday to Friday, 9am-5:30pm). Alternatively, people can email [info@springwellsolarfarm.co.uk](mailto:info@springwellsolarfarm.co.uk) or visit the project website, [www.springwellsolarfarm.co.uk](http://www.springwellsolarfarm.co.uk).

24/7

marketplace.co.uk Your local place to buy and sell

## Public Notices

### LINCOLNSHIRE COUNTY COUNCIL

#### ROAD TRAFFIC REGULATION ACT 1984 TEMPORARY RESTRICTION TO TRAFFIC (LINCOLN - BOUTHAM AVENUE)

NOTICE IS HEREBY GIVEN that LINCOLNSHIRE COUNTY COUNCIL has made an Order on Boutham Avenue to allow for works to be carried out on or adjacent to the road.

The effect of the Order will be to impose the temporary traffic restrictions on the roads as specified in the Schedule.

The Order will come into operation on 18 December 2023 and will continue in force for a period of 18 months or the completion of the works whichever is the sooner.

The works are expected to commence on or about 18 December 2023 and continue for approximately 5 days.

Access will be maintained to properties on the affected length of road but may be subject to delays.

The restriction shall only apply during such times and to such extent as shall from time to time be indicated by traffic signs prescribed by the Traffic Signs Regulations and General Directions 2016.

An alternative route for vehicles will be signed.

SCHEDULE - No waiting and no loading at any time Order - Boutham Avenue (Full length, both sides)

#### ROAD TRAFFIC REGULATION ACT 1984 TEMPORARY RESTRICTION TO TRAFFIC (CHERRY WILLINGHAM - CHURCH LANE)

NOTICE IS HEREBY GIVEN that LINCOLNSHIRE COUNTY COUNCIL has made an Order on Church Lane to allow for works to be carried out on or adjacent to the road.

The effect of the Order will be to impose the temporary traffic restrictions on the roads as specified in the Schedule.

The Order will come into operation on 18 December 2023 and will continue in force for a period of 18 months or the completion of the works whichever is the sooner.

The works are expected to commence on or about 18 December 2023 and continue for approximately 5 days.

Access will be maintained to properties on the affected length of road but may be subject to delays.

The restriction shall only apply during such times and to such extent as shall from time to time be indicated by traffic signs prescribed by the Traffic Signs Regulations and General Directions 2016.

An alternative route for vehicles will be signed.

SCHEDULE - Road Closure Order - Church Lane (Between Lady Meers Road & Becke Close)

#### ROAD TRAFFIC REGULATION ACT 1984 TEMPORARY RESTRICTION TO TRAFFIC (OLEBY - HEATH ROAD)

NOTICE IS HEREBY GIVEN that LINCOLNSHIRE COUNTY COUNCIL has made an Order on Heath Road to allow for works to be carried out on or adjacent to the road.

The effect of the Order will be to impose the temporary traffic restrictions on the roads as specified in the Schedule.

The Order will come into operation on 18 December 2023 and will continue in force for a period of 18 months or the completion of the works whichever is the sooner.

The works are expected to commence on or about 18 December 2023 and continue for approximately 5 days.

Access will be maintained to properties on the affected length of road but may be subject to delays.

The restriction shall only apply during such times and to such extent as shall from time to time be indicated by traffic signs prescribed by the Traffic Signs Regulations and General Directions 2016.

An alternative route for vehicles will be signed.

SCHEDULE - Road Closure Order - Heath Road (Between A607 & a point 1000m East)

#### ROAD TRAFFIC REGULATION ACT 1984 TEMPORARY RESTRICTION TO TRAFFIC (WADDINGTON - STAPLES LANE)

NOTICE IS HEREBY GIVEN that LINCOLNSHIRE COUNTY COUNCIL intends to make an Order on Staples Lane to allow for works to be carried out on or adjacent to the road.

The effect of the Order will be to impose the temporary traffic restrictions on the roads as specified in the Schedule.

The Order will come into operation on 2 January 2024 and will continue in force for a period of 18 months or the completion of the works whichever is the sooner.

The works are expected to commence on or about 2 January 2024 and continue for approximately 4 days.

Access will be maintained to properties on the affected length of road but may be subject to delays.

The restriction shall only apply during such times and to such extent as shall from time to time be indicated by traffic signs prescribed by the Traffic Signs Regulations and General Directions 2016.

An alternative route for vehicles will be signed.

SCHEDULE - Road Closure - Broadway (Between Newport & Wetherham Road)

The works are expected to commence on or about 2 January 2024 and continue for approximately 4 days.

Access will be maintained to properties on the affected length of road but may be subject to delays.

The restriction shall only apply during such times and to such extent as shall from time to time be indicated by traffic signs prescribed by the Traffic Signs Regulations and General Directions 2016.

An alternative route for vehicles will be signed.

SCHEDULE - Road Closure Order - Staples Lane (Between 50m & 120m East of Far Lane)

#### ROAD TRAFFIC REGULATION ACT 1984 TEMPORARY RESTRICTION TO TRAFFIC (EAGLE HALL/SWINDERY - STATION ROAD)

NOTICE IS HEREBY GIVEN that LINCOLNSHIRE COUNTY COUNCIL intends to make an Order on Station Road to allow for works to be carried out on or adjacent to the road.

The effect of the Order will be to impose the temporary traffic restrictions on the roads as specified in the Schedule.

The Order will come into operation on 2 January 2024 and will continue in force for a period of 18 months or the completion of the works whichever is the sooner.

The works are expected to commence on or about 2 January 2024 and continue for approximately 1 month.

Access will be maintained to properties on the affected length of road but may be subject to delays.

The restriction shall only apply during such times and to such extent as shall from time to time be indicated by traffic signs prescribed by the Traffic Signs Regulations and General Directions 2016.

An alternative route for vehicles will be signed.

SCHEDULE - Road Closure Order - Station Road (Between Swindery Road & a point 350m South)

#### ROAD TRAFFIC REGULATION ACT 1984 TEMPORARY RESTRICTION TO TRAFFIC (NORTH WYEHAM - STATION ROAD)

NOTICE IS HEREBY GIVEN that LINCOLNSHIRE COUNTY COUNCIL intends to make an Order on Station Road to allow for works to be carried out on or adjacent to the road.

The effect of the Order will be to impose the temporary traffic restrictions on the roads as specified in the Schedule.

The Order will come into operation on 24 December 2023 and will continue in force for a period of 18 months or the completion of the works whichever is the sooner.

The works are expected to commence on or about 24 December 2023 and continue for approximately 4 days.

Access will be maintained to properties on the affected length of road but may be subject to delays.

The restriction shall only apply during such times and to such extent as shall from time to time be indicated by traffic signs prescribed by the Traffic Signs Regulations and General Directions 2016.

An alternative route for vehicles will be signed.

SCHEDULE - Road Closure - Station Road (Between 25m North & 25m South of Level Crossing)

#### ROAD TRAFFIC REGULATION ACT 1984 TEMPORARY RESTRICTION TO TRAFFIC (LINCOLN - BROADWAY)

NOTICE IS HEREBY GIVEN that LINCOLNSHIRE COUNTY COUNCIL intends to make an Order on Broadway to allow for works to be carried out on or adjacent to the road.

The effect of the Order will be to impose the temporary traffic restrictions on the roads as specified in the Schedule.

The Order will come into operation on 3 January 2024 and will continue in force for a period of 18 months or the completion of the works whichever is the sooner.

The works are expected to commence on or about 3 January 2024 and continue for approximately 3 months.

Access will be maintained to properties on the affected length of road but may be subject to delays.

The restriction shall only apply during such times and to such extent as shall from time to time be indicated by traffic signs prescribed by the Traffic Signs Regulations and General Directions 2016.

An alternative route for vehicles will be signed.

SCHEDULE - Road Closure - Broadway (Between Newport & Wetherham Road)

ANDY GUTHERSON, Executive Director of Place, Lincolnshire County Council

Any item any price free online



Booking online,  
what a great idea

marketplace.co.uk Your local place to buy and sell

Any item any price free online

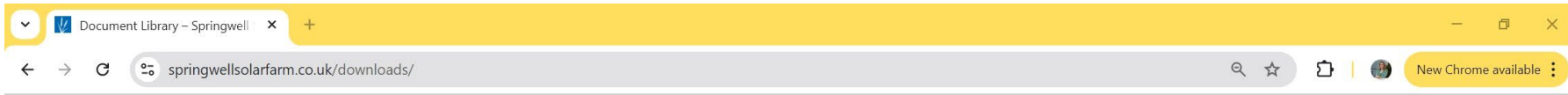


Find an out  
of this world  
bargain  
online

marketplace.co.uk Your local place to buy and sell

# Appendix D-3 – Screenshot of Springwell Solar Farm website with availability of the SoCC





**Preliminary Environmental Information Report (PEIR)**

- [Volume 1 – Main Report](#)
- [Volume 2 – Supporting Figures](#)
- [Volume 3 – Supporting Reports](#)
- [Volume 4 – Landscape Viewpoints](#)

**Statement of Community Consultation (11 December 2023)**

- [Statement of Community Consultation](#)

**Phase one consultation (24 January – 7 March 2023)**

- [Consultation booklet](#)
- [Consultation newsletter](#)
- [Our early design](#)
- [Springwell West, Central and East](#)

**Launch (10 January 2023)**

- [Springwell Solar Farm launch leaflet](#)





Springwell-Solar-Farm-Statement-of-Community-Consultation.pdf

1 / 21 | 100%

Springwell Solar Farm  
Statement of Community Consultation  
Phase Two Consultation

1

2

3

4

Springwell Solar Farm  
Statement of Community Consultation  
Phase Two Consultation

# Appendix D-4 – Compliance with the SoCC



Table D-1: Summary of commitments made in SoCC and how the Applicant has fulfilled these.

Page	Section	SoCC Commitment	Detail
2	1.1.10	<i>“Before we carry out this consultation, we must publish a statement of how we will consult with the local community – known as a Statement of Community Consultation (‘SoCC’).”</i>	The Applicant published the SoCC on 11 December 2023, four weeks ahead of the commencement of its Phase Two Consultation on 11 January 2024. The methods used to publicise the availability of the SoCC are detailed in <b>Chapters 4 and 5</b> of the <b>Consultation Report [EN010149/APP/5.1]</b> .
2	1.1.10	<i>“This SoCC has been prepared and publicised in accordance with Section 47 of the Planning Act 2008, Regulation 12 of the Infrastructure Planning (Environmental Impact Assessment) Regulations 2017 and relevant guidance from the Planning Inspectorate (Planning Act 2008: Guidance on the pre-application process).”</i>	Details of how the Applicant has complied with all statutory requirements and guidance is set out in <b>Appendix M-1: Compliance with PA 2008: Guidance on the pre-application stage for NSIPs [EN010149/APP/5.2]</b> .
2	1.1.11	<i>“...It also reflects feedback we have received from the host local authorities for Springwell – North Kesteven District Council and Lincolnshire County Council – which we have consulted in the preparation of this document.”</i>	<p>The Applicant consulted with the host authorities informally and formally on the contents of the draft SoCC and had regard to their comments in preparing the final SoCC. This is summarised in <b>Chapter 4</b> of the <b>Consultation Report [EN010149/APP/5.1]</b>.</p> <p>For more information on how the Applicant has had regard to informal and formal feedback received from the host authorities on the draft SoCC, see <b>Appendix C-2: Regard had to host authority informal feedback on draft SoCC</b> and <b>Appendix C-4: Regard had to host authority formal feedback on draft SoCC [EN010149/APP/5.2]</b>.</p>



Page	Section	SoCC Commitment	Detail
2	1.1.12	<i>“As part of our DCO application we will submit a Consultation Report, detailing how we have consulted, the feedback that we received during our statutory consultation and how we have had regard to it.”</i>	A <b>Consultation Report [EN010149/APP/5.1]</b> and its related <b>Appendices [EN010149/APP/5.2]</b> form part of the DCO Application.
3	1.2.2	<i>“At the statutory consultation, we will be sharing the initial results of our ongoing environmental assessments as well as preliminary information on mitigation measures that we may need to introduce to avoid, prevent, reduce or, if possible, offset any likely significant adverse effects. We will do so in a Preliminary Environmental Information Report (‘PEIR’) document.”</i>	The Applicant published the PEIR as part of its Phase Two Consultation which was available for the local community and stakeholders to examine during the consultation period in the manner set out in <b>Chapter 5</b> of the <b>Consultation Report [EN010149/APP/5.1]</b> .  A PEIR was not required for the additional targeted consultation as there were no new potential environmental effects identified.
5	2.1.4	<i>“Further details of the proposed Springwell Solar Farm will be included in materials published during the consultation.”</i>	Details of the Proposed Development were published in a range of consultation materials as part of the Applicant’s Phase Two Consultation. All materials were listed in the SoCC and were available from the start of consultation period. More details of the consultation materials are available in <b>Chapter 5</b> of the <b>Consultation Report [EN010149/APP/5.1]</b> .
7	3.1.1	<i>“Our approach to consultation has been informed by our early engagement with key stakeholders, as well as our phase one consultation.”</i>	Prior to its Phase Two Consultation, the Applicant carried out a period of non-statutory consultation (“Phase One Consultation”) on its early plans and proposals and began a programme of engagement with stakeholders, which informed

Page	Section	SoCC Commitment	Detail
			the Applicant’s approach to consultation (see <b>Chapters 2 and 3</b> of the <b>Consultation Report [EN010149/APP/5.1]</b> ).
7	3.1.7	<i>“Feedback from this consultation has helped us refine our proposals and our ongoing approach to consultation and engagement. For example, we received feedback on the timings of our public events (to go past 7pm to accommodate different working schedules) and on the content that should be included at the next stage of consultation – such as visualisations of the proposals.”</i>	The Applicant sought to incorporate any feedback on its Phase One Consultation into its plans for Phase Two Consultation. This included adjusting the times of public events to go later into the evening, producing a 3D model and visualisations to be shared at the public events and holding an event at RAF Digby.
9	4.1.1	<i>“Our statutory consultation will be open to anyone with an interest in Springwell Solar Farm who considers that they may be directly, or indirectly affected by the proposals, or has a view that they would like to be considered.”</i>	The Applicant used a variety of methods and techniques to ensure that anyone with an interest in the Proposed Development could access information and provide their feedback. Information on how this was achieved is provided in <b>Chapter 5</b> of the <b>Consultation Report [EN010149/APP/5.1]</b> .
9	4.1.2	<i>“The feedback that we receive from this stage of consultation will help us to further refine our proposals and inform our assessments before we submit our DCO application.”</i>	The Applicant has carefully considered all feedback received to Phase Two Consultation, as explained in <b>Chapters 5 and 6</b> of the <b>Consultation Report [EN010149/APP/5.1]</b> .  The Applicant has responded to feedback received to Phase Two Consultation in <b>Appendix J-1: Summary of Section 42(1)(a)(b) and (d) responses to Phase Two Consultation and consideration by topic</b> and <b>Appendix J-</b>

Page	Section	SoCC Commitment	Detail
			<p><b>2: Summary of Section 47 responses to Phase Two Consultation and consideration by topic [EN010149/APP/5.2].</b></p> <p>The Applicant has carefully considered all feedback received to its targeted consultation, as explained in <b>Chapter 7</b> of the <b>Consultation Report [EN010149/APP/5.1]</b>. The Applicant has responded to feedback received to targeted consultation in <b>Appendix K-3: Summary of responses to targeted consultation and consideration by topic [EN010149/APP/5.2]</b>.</p>
9	4.1.3	<p><i>“We are committed to making sure that everybody has the opportunity to understand and provide their feedback on our proposals for Springwell Solar Farm. Our key objectives for achieving this through our pre-application consultation include:</i></p> <ul style="list-style-type: none"> <li><i>• Ensuring thorough, open, and transparent engagement and consultation on our proposals.</i></li> <li><i>• Ensuring proposals are clearly presented, and issues easily understood.</i></li> <li><i>• Providing sufficient opportunities for interested parties to understand and influence our plans.</i></li> </ul>	<p>The Applicant has achieved its objectives through its Phase Two Consultation by employing a range of different techniques to ensure that anyone with an interest in the Proposed Development could find out more about the proposals and provide their feedback. <b>Chapter 5</b> of the <b>Consultation Report [EN010149/APP/5.1]</b> sets out the activities and techniques undertaken by the Applicant to promote the consultation.</p>

Page	Section	SoCC Commitment	Detail
		<ul style="list-style-type: none"> <li>• <i>Gathering high quality responses to, and feedback on, our plans to help inform proposals.</i></li> <li>• <i>Delivering consultation that meets the legal requirements and best practice for a DCO application.”</i></li> </ul>	
9	4.3.1	<p><i>“During the statutory consultation, we will be asking for views on:</i></p> <ul style="list-style-type: none"> <li>• <i>The proposals for Springwell Solar Farm, including the preferred locations of each of its elements and our proposed environmental enhancements and mitigation.</i></li> <li>• <i>The PEIR, which will present an initial account of the likely significant environmental effects of Springwell Solar Farm during construction, operation and decommissioning, as well as preliminary details on mitigation measures that we may need to introduce to avoid, prevent, reduce or, if possible, offset any potentially significant adverse effects.</i></li> <li>• <i>How Springwell Solar Farm could contribute to the local community,</i></li> </ul>	<p>The Applicant invited feedback on all elements of the Proposed Development. Details about the Proposed Development were set out in a range of consultation materials enabling anyone with an interest in the Proposed Development to find out more about the proposals and provide their feedback. Copies of the consultation materials are available in <b>Appendix G-2: Phase Two Consultation materials and advertising</b> and <b>Appendix G-3: Screenshots of Phase Two Consultation website and virtual exhibition [EN010149/APP/5.2]</b>. More detail about the different techniques used to publicise the consultation is available in <b>Chapter 5</b> of the <b>Consultation Report [EN010149/APP/5.1]</b>.</p> <p>As part of the additional targeted consultation, the Applicant primarily sought feedback on proposed changes to the Order Limits to enable the delivery of highways improvements. New land interests identified by the Applicant were also consulted on the Proposed Development as presented at Phase Two Consultation in addition to the proposed changes. Information</p>

Page	Section	SoCC Commitment	Detail
		<i>including the development of a community benefit package.”</i>	about the additional targeted consultation is set out in <b>Chapter 7</b> of the <b>Consultation Report [EN010149/APP/5.1]</b> .
10	4.4.1	<i>“We have defined two geographic zones – an inner zone and an outer zone - for the purpose of consulting with the local community. This recognises the fact that levels of potential impact are likely to vary with distance to the site. These zones have informed how we will publicise the consultation.”</i>	The Applicant defined two geographic zones of the consultation for the purposes of consulting the community. The two zones, and the techniques used to promote the consultation within each zone, are described in <b>Chapter 5</b> of the <b>Consultation Report [EN010149/APP/5.1]</b> .
10	4.4.2	<i>“We will publicise the consultation in both zones using our project website, by placing adverts in local newspapers and on social media, and by issuing press releases to local media outlets.”</i>	As required by section 48 of the PA 2008, the Applicant publicised the Phase Two Consultation in the following newspapers: <ul style="list-style-type: none"> <li>• Lincolnshire Echo</li> <li>• The Guardian</li> <li>• London Gazette</li> </ul> Copies of the notices as published are available in <b>Appendix I-1: Newspaper notices published in compliance with s48 of the PA 2008 [EN010149/APP/5.2]</b> . The section 48 notice was also published on the Springwell Solar Farm website (see <b>Appendix G-3: Screenshots of Phase Two Consultation website and virtual exhibition [EN010149/APP/5.2]</b> ) and included in letters sent to prescribed consultees (see <b>Appendix F-1: Sample letters sent to consultees under</b>

Page	Section	SoCC Commitment	Detail
			<p><b>s42(1)(a), (b) and (d) and non-prescribed consultees [EN010149/APP/5.2].</b></p> <p>The Applicant additionally sought to raise awareness of the consultation amongst the local communities using the following techniques:</p> <ul style="list-style-type: none"><li>• Issuing press releases to attract media coverage and raise awareness of the consultation at publication of SoCC on 11 December 2023 and at the start of consultation on 11 January 2024.</li><li>• Promotion of the consultation on the Springwell Solar Farm project website and social media channels from 11 January 2024 to the end of the consultation period.</li><li>• Advertising in print versions of the Louth Leader and Lincolnshire Echo on 11 January 2024 and running a digital campaign between 11 January 2024 – 18 January 2024 which gained over 250,000 impressions.</li><li>• Advertising on Facebook and LinkedIn social media channels.</li></ul> <p>More detail can be found in <b>Chapter 5</b> of the <b>Consultation Report [EN010149/APP/5.1]</b>. Sample adverts, social media posts and the start of consultation press release can be found in <b>Appendix G-2.7</b> of the <b>Consultation Report [EN010149/APP/5.2]</b>.</p>

Page	Section	SoCC Commitment	Detail
			The targeted consultation was limited to land interests and statutory consultees likely to have an interest in the proposed changes to the Order Limits and highways improvements. A post setting out information about the targeted consultation was published on the Springwell Solar Farm website on Wednesday 17 July 2024 (see <b>Appendix K-2.6: Targeted consultation website post [EN010149/APP/5.2]</b> ).
10	4.4.3	<i>“The inner zone covers people who live and work close to the proposed Springwell Solar Farm who are likely to be directly affected by the proposals and their political representatives. Our consultation activity will be most intensive within this zone. “</i>	<p>The Applicant focused activity within the inner zone of consultation. This included sending a letter publicising the SoCC and consultation to all addresses within the inner zone on 11 December 2023, and a consultation newsletter on 11 January 2024. Where possible, public events and deposit points were focused in this area.</p> <p>The Applicant also wrote to political representatives and community groups within this zone to offer them a briefing and support them to promote the consultation using their existing communication channels.</p> <p>For more detail on how the Applicant carried out its Phase Two Consultation, please see <b>Chapter 5</b> of the <b>Consultation Report [EN010149/APP/5.1]</b>.</p>
10	4.4.4.	<i>“This [inner] zone includes all residential properties within two kilometres of the proposed site boundary, extending in some areas to consider the potential wider effects of the proposal and human geographic</i>	A map showing the area of the inner zone is included in <b>Figure 5-3</b> of the <b>Consultation Report [EN010149/APP/5.1]</b> .

Page	Section	SoCC Commitment	Detail
		<i>boundaries e.g., ensuring all homes within a settlement have been included.”</i>	
10	4.4.5	<i>“A newsletter will be sent to all homes and businesses within the inner zone at the beginning of consultation. Where possible, it is intended that public events and deposit points will be focused in or close to this area.”</i>	<p>A newsletter was distributed to all addresses on Thursday 11 January 2024 within the inner consultation zone – totalling 5,772 addresses. The newsletter is provided at <b>Appendix G-2.2: Phase Two Consultation newsletter [EN010149/APP/5.2]</b>.</p> <p>The five public events that were held as part of Phase Two Consultation were held within the inner consultation zone. The Venue and Sleaford Library were used as deposit points. The Venue is located within the inner zone of consultation. Sleaford Library is located within the outer zone of consultation. The venues were selected in agreement with host authorities.</p> <p>The targeted consultation was limited to land interests and statutory consultees likely to have an interest in the changes to the Order Limits and highways improvements. The targeted consultation did not require public events or deposit points.</p>
10	4.4.6	<i>“We will write to political representatives and community groups within this zone to offer them a briefing and support them to promote the consultation using their existing communication channels.”</i>	<p>The Applicant wrote to political representatives and community organisations within the inner zone to offer a briefing on the proposals, and share details of the consultation. An example of the email and letter is included in <b>Appendix F-1: Sample letters sent to consultees under s42(1)(a), (b) and (d) and non-prescribed consultees [EN010149/APP/5.2]</b>.</p>



Page	Section	SoCC Commitment	Detail
			As part of the additional targeted consultation, the Applicant wrote to members representing the wards and division in which the site is located at the commencement of the targeted consultation to offer them a briefing on the proposed changes.
10	4.4.7-8	<p><i>“The outer zone covers those living and working in the area outside of the inner zone, who may be affected by or have an interest in our proposals due to the proposals being brought forward in their local authority. This zone follows the local authority boundary of North Kesteven District Council.”</i></p> <p><i>“As well as the methods set out in section 4.4.2, we will write to district and county political representatives within this zone to support them to promote the consultation using their existing communication channels.”</i></p>	<p>All Phase Two Consultation advertising activity – both the statutory notices and wider advertisement – covered both the inner and outer zone of consultation.</p> <p>The Applicant wrote to district and county representatives within the outer zone of consultation to offer a briefing and share details of the consultation. An example of the letter is included in <b>Appendix F-1: Sample letters sent to consultees under s42(1)(a), (b) and (d) and non-prescribed consultees [EN010149/APP/5.2]</b>.</p> <p>The targeted consultation was limited to land interests and statutory consultees likely to have an interest in the changes to the Order Limits and highways improvements. Due to the limited nature of the proposed changes, it was not considered necessary to include consultees within the outer zone of consultation.</p>
10-11	4.4.9	<p><i>“At the same time as consulting the local community, we will also consult a range of statutory consultees as set out by Section 42 and Section 48 of the Planning Act 2008 and Regulation 13 of the Infrastructure Planning (Environmental Impact</i></p>	<p>The Applicant consulted with all statutory consultees prescribed by the PA 2008 and EIA Regulations.</p> <p>Information about how the Applicant has consulted with statutory consultees under sections 42(1)(a), (b), and (d) of the PA 2008, and other organisations recognised to have an</p>

Page	Section	SoCC Commitment	Detail
		<p>Assessment) Regulations 2017, and additional organisations that we recognise to have an interest in the proposed Springwell Solar Farm. These groups include:</p> <ul style="list-style-type: none"> <li>• The host and neighbouring local authorities.</li> <li>• Statutory bodies (such as the Environment Agency, Historic England, Natural England and others).</li> <li>• Other community groups and organisations that may have an interest in the proposals (such as Lincolnshire Wildlife Trust, Lincolnshire Ramblers and others).</li> <li>• People with an interest in land (e.g., owners or tenants) that may be affected by the proposals.”</li> </ul>	<p>interest in the Proposed Development is included in <b>Chapter 5</b> of the <b>Consultation Report [EN010149/APP/5.1]</b>.</p> <p>A list of section 42(1)(a) and (b) consultees is included in <b>Appendix E-1: List of s42(1)(a) and (b) consultees [EN010149/APP/5.2]</b>. A full list of persons falling within section 44 of the PA 2008 is included within the <b>Book of Reference</b> submitted with the Application <b>[EN010149/APP/4.3]</b>. A list of non-prescribed consultees and community organisations contacted is included at <b>Appendix H-1: List of non-prescribed consultees and community organisations consulted during Phase Two Consultation [EN010149/APP/5.2]</b>.</p> <p>As part of the additional targeted consultation, the Applicant wrote to prescribed and non-prescribed consultees likely to have an interest in the proposed changes. The list of organisations contacted was agreed with the host authorities. The organisations consulted are listed in <b>Appendix K-1: List of prescribed consultees consulted during targeted consultation [EN010149/APP/5.2]</b>.</p>
11	4.4.10	<p>“The proposed application will also be publicised as required by Section 48 of the Planning Act 2008.”</p>	<p>As required by section 48 of the PA 2008, the Applicant publicised the Phase Two Consultation in the following newspapers:</p> <ul style="list-style-type: none"> <li>• Lincolnshire Echo</li> <li>• The Guardian</li> </ul>

Page	Section	SoCC Commitment	Detail
			<ul style="list-style-type: none"> <li>London Gazette</li> </ul> <p>Copies of the notices as published are available in <b>Appendix I-1: Newspaper notices published in compliance with s48 of the PA 2008 [EN010149/APP/5.2]</b>. The section 48 notice was also published on the Springwell Solar Farm website (see <b>Appendix G-3: Screenshots of Phase Two Consultation website and virtual exhibition [EN010149/APP/5.2]</b>) and included in letters sent to prescribed consultees (see <b>Appendix F-1: Sample letters sent to consultees under s42(1)(a), (b) and (d) and non-prescribed consultees [EN010149/APP/5.2]</b>).</p> <p>Given the nature of the targeted consultation, which included limited changes to the Order Limits to allow for highways improvements, it was not considered necessary for there to be a further round of section 48 notices.</p>
12	4.5.1	<i>“[The consultation] will be open between Thursday 11 January and 11:59pm on Thursday 22 February 2024.”</i>	Phase Two Consultation was open between Thursday 11 January and 11:59pm on Thursday 22 February 2024.
12	4.5.2	<i>“We will present information in a variety of formats and enable feedback to be provided in a number of ways to encourage participation in the consultation.”</i>	<p>Information about the Proposed Development was available in a variety of formats, including:</p> <ul style="list-style-type: none"> <li>A consultation booklet: an accessible summary of the proposals for Springwell Solar Farm, the EIA process, the consultation and planning process, approach to community benefit and next steps. This was available in hard copy at deposit points and the public events, posted on request, and</li> </ul>

Page	Section	SoCC Commitment	Detail
			<p>published on the Springwell Solar Farm website to view and download.</p> <ul style="list-style-type: none"><li>• A 3D model: a virtual model of the proposed Springwell Solar Farm site was available at the public events</li><li>• A website: the Springwell Solar Farm project website (<a href="http://www.springwellsolarfarm.co.uk">www.springwellsolarfarm.co.uk</a>) hosted all the consultation documents, including the PEIR, as well as links to the virtual exhibition and online questionnaire. It also included details of the deposit points and public events as well as hosting the project's contact information.</li><li>• A virtual exhibition: containing the exhibition banners on display at the public events and a link to the online questionnaire and Springwell Solar Farm project website.</li><li>• Exhibition banners: an accessible summary of the proposals for Springwell Solar Farm, the EIA process, the consultation and planning process, approach to community benefit and next steps which were displayed at the public events. The exhibition banners were available in the virtual exhibition and as PDFs to download from the Springwell Solar Farm project website.</li><li>• The Preliminary Environment Information Report (PEIR): containing the initial results of ongoing environmental assessments as well as preliminary information on measures to avoid, prevent, reduce or, if possible, offset any likely significant adverse effects.</li></ul>

Page	Section	SoCC Commitment	Detail
			<p>Feedback could be provided in a number of ways, including:</p> <ul style="list-style-type: none"> <li>• Completing an online questionnaire accessed through the Springwell Solar Farm project website and virtual exhibition.</li> <li>• Submitting comments or completed questionnaire by email to: <a href="mailto:info@springwellsolarfarm.co.uk">info@springwellsolarfarm.co.uk</a></li> <li>• Posting this questionnaire or submitting comments (no stamp required) to: Springwell Solar Farm, FREEPOST</li> </ul> <p>More information can be found in <b>Chapter 5</b> of the <b>Consultation Report [EN010149/APP/5.1]</b>.</p>
12	4.5.3	<i>“Should we carry out any further stages of consultation prior to submission of the DCO application, we will use some, but not necessarily all, of the means of consultation set out in this document. We will work with the host authorities to assist us in deciding the most appropriate activities for any further stages of consultation.”</i>	<p>The Applicant agreed its approach to carrying out its additional targeted consultation with the host authorities. The Applicant wrote to the host authorities in July 2024 to confirm its approach. See <b>Chapter 7</b> of the <b>Consultation Report [EN010149/APP/5.1]</b> for further details.</p>
12-13	4.6.1	<p><i>“Information about our proposals will be published for consultation in the following formats:</i></p> <ul style="list-style-type: none"> <li>• <b>A consultation newsletter:</b> <i>a newsletter issued to addresses within the inner zone setting out how to find out more about the</i></li> </ul>	<p>The documents listed were published as part of Phase Two Consultation (see <b>Chapter 5</b> of the <b>Consultation Report [EN010149/APP/5.1]</b> for further details).</p> <p>Given the nature of the targeted consultation, which included limited changes to the Order Limits to allow for improvements, a map was produced showing the proposed</p>

Page	Section	SoCC Commitment	Detail
		<p><i>proposals and participate in the consultation; including information on accessing materials, the locations and timings of the public events, and how people can share their feedback. This will additionally be published on the project website to view and download.</i></p> <ul style="list-style-type: none"><li>• <b>A consultation booklet:</b> <i>an accessible summary of our proposals for Springwell Solar Farm, the EIA process, the consultation and planning process, approach to community benefit and next steps. This will be available in hard copy at deposit points and the public events, posted on request, and published on the project website to view and download</i></li><li>• <b>A questionnaire:</b> <i>the main way we will collect feedback from the community. It will include easy to understand questions on our proposals, the answers to which will be considered as we refine our plans. This will be available in hard copy at deposit points and the public events, posted on request and published on the project website to view and download.</i></li></ul>	<p>changes (see <b>Chapter 7</b> of the <b>Consultation Report [EN010149/APP/5.1]</b> for details).</p>

Page	Section	SoCC Commitment	Detail
		<ul style="list-style-type: none"><li>• <b>A 3D model:</b> a virtual model of the proposed Springwell Solar Farm site available at the public events</li><li>• <b>A website:</b> the project website (<a href="http://www.springwellsolarfarm.co.uk">www.springwellsolarfarm.co.uk</a>) will host all of the consultation documents, including the PEIR, as well as links to the virtual exhibition and online questionnaire. It will also include details of the deposit points and public events as well as hosting contact information for people to get in touch with the team.</li><li>• <b>A virtual exhibition:</b> containing the exhibition banners on display at the public events and a link to the online questionnaire and project website. It will host contact information for people to get in touch with the team.</li><li>• <b>Exhibition banners:</b> an accessible summary of our proposals for Springwell Solar Farm, the EIA process, the consultation and planning process, approach to community benefit and next steps which will be displayed at the public events. The exhibition banners will also be available in the virtual exhibition and</li></ul>	

Page	Section	SoCC Commitment	Detail
		<p>as PDFs to download from the project website.</p> <ul style="list-style-type: none"> <li>• <b>The Preliminary Environment Information Report (PEIR):</b> containing the initial results of our ongoing environmental assessments as well as preliminary information on measures to avoid, prevent, reduce or, if possible, offset any likely significant adverse effects”</li> </ul>	
13	4.6.2	<p>“Printed copies of the SoCC and consultation documents – including the PEIR - will be available in local libraries and community venues (‘deposit points’) close to the proposed site for Springwell Solar Farm and maintained throughout the consultation period. USBs containing all of these documents will also be available to take away.”</p>	<p>Printed copies of the SoCC were available at deposit points from 11 December 2023. The SoCC was published on the Springwell Solar Farm project website from 11 December 2023.</p> <p>All consultation materials – including the PEIR – were available from deposit points from 11 January 2024, as well as USBs containing all of the documents for people to take away. Regular checks of the deposits were undertaken to ensure there was always stock available. More information about the deposit points can be found in <b>paragraph 5.5.7</b> of the <b>Consultation Report [EN010149/APP/5.1]</b>. Images of the deposit points clearly showing the materials available are provided in <b>Figures 5-5</b> and <b>5-6</b> of the <b>Consultation Report [EN010149/APP/5.1]</b>.</p>



Page	Section	SoCC Commitment	Detail
			Given the nature of the targeted consultation, which included limited changes to the Order Limits to allow for highways improvements, it was not considered necessary for documents to be deposited at the deposit points.
13	4.6.2	<i>“All materials will be published on the project website (<a href="http://www.springwellsolarfarm.co.uk">www.springwellsolarfarm.co.uk</a>).”</i>	<p>All consultation documents were available on the Springwell Solar Farm project website at <a href="http://www.springwellsolarfarm.co.uk">www.springwellsolarfarm.co.uk</a> at the start of Phase Two Consultation on 11 January 2024. Screenshots of the Springwell Solar Farm website during Phase Two Consultation are available at <b>Appendix G-3: Screenshots of Phase Two Consultation website and virtual exhibition [EN010149/APP/5.2]</b>.</p> <p>A map showing the proposed changes to the Order Limits subject to targeted consultation was posted on the Springwell Solar Farm project website at the start of the consultation period. A screenshot of the Springwell Solar Farm website page can be found in <b>Appendix K-2: Targeted consultation materials [EN010149/APP/5.2]</b>.</p>
13	Table 2	Deposit points locations and opening hours: <ul style="list-style-type: none"> <li>- Sleaford Library, 13-16 Market Place, Sleaford NG34 7SR</li> <li>- The Venue, Grantham Road, Navenby LN5 0JJ</li> </ul>	<p>The Applicant stocked the identified deposit points with copies of the SoCC from 11 December 2023, and all consultation materials – including the PEIR – from 11 January 2024. There were also USBs containing all of the documents for people to take away. Regular checks of the deposits were undertaken to ensure there was always stock available. More information about the deposit points can be found in <b>paragraph 5.5.7 of the Consultation Report [EN010149/APP/5.1]</b>. Images of the deposit points clearly showing the materials available are</p>

Page	Section	SoCC Commitment	Detail
			provided in <b>Figures 5-5</b> and <b>5-6</b> of the <b>Consultation Report [EN010149/APP/5.1]</b> .
13	4.6.5	<i>“We will provide hard copies of the consultation booklet, questionnaire and SoCC free of charge on request – as well as USBs containing all of the consultation materials (including the PEIR). We will review requests for hard copies of the PEIR on a case-by-case basis. A fee to cover printing costs (up to a maximum of £750 for one full set of consultation documents) may be charged to the recipient.”</i>	<p>For Phase Two Consultation, printed copies of the consultation booklet, questionnaire and SoCC were available free of charge and could be requested via the Freephone number or email, or via the deposit points. No requests for hard copies of the PEIR were received during the consultation period. USBs containing all of the consultation documents – including the PEIR – were available free of charge. Nine copies of the consultation booklet, questionnaire and USBs were sent to consultees on request during the consultation period.</p> <p>During the targeted consultation, printed copies of the map were provided to all land interests and relevant prescribed consultees that were consulted. Hard copies of the materials for Phase Two Consultation were also available on request. One copy of the consultation booklet was sent to a new land interest during the targeted consultation period.</p>
13	4.6.6	<i>“Requests for consultation information in alternative formats (e.g., in different languages, large print or easy access) will be considered on a case-by-case basis so we can establish how best to provide the information required.”</i>	The Applicant did not receive any requests for the information to be presented in alternative formats during Phase Two Consultation or targeted consultation.
14	4.7.1	<i>“From the start of consultation, the project website (<a href="http://www.springwellsolarfarm.co.uk">www.springwellsolarfarm.co.uk</a>) will</i>	All consultation documents and links to the virtual exhibition and online questionnaire were available on the Springwell

Page	Section	SoCC Commitment	Detail
		<p><i>host all of the consultation documents, including the PEIR, as well as links to the virtual exhibition and online questionnaire. It will also include details of the deposit points and public events as well as hosting contact information for people to get in touch with the team.”</i></p>	<p>Solar Farm website <a href="http://www.springwellsolarfarm.co.uk">www.springwellsolarfarm.co.uk</a> from the start of the consultation period on 11 January 2024. It included details of the public events and deposit points, and hosted contact information to enable people to get in touch with the team to find out more about the Proposed Development or request hard copy documents or USBs. Screenshots of the Springwell Solar Farm website during Phase Two Consultation are available at <b>Appendix G-3: Screenshots of Phase Two Consultation website and virtual exhibition [EN010149/APP/5.2]</b>.</p> <p>Given the nature of the targeted consultation, which included limited changes to the Order Limits to allow for highways improvements, a map was produced showing the proposed changes (see <b>Chapter 7 of the Consultation Report [EN010149/APP/5.1]</b> for details). This was published on the Springwell Solar Farm website at the start of consultation.</p>
14	4.7.2	<p><i>“The interactive virtual exhibition will be accessed through the website and will provide an alternative format for people to learn about the proposals. It will include information boards which will be on display at the public events, links to documents and the online questionnaire.”</i></p>	<p>A virtual exhibition was available online during Phase Two Consultation, which displayed the exhibition boards available at the in-person public events and included links to documents and the online questionnaire. It also included a portal showing 3D visualisations of the Proposed Development from key locations around the proposed Site boundary.</p> <p>For screenshots of the virtual exhibition, see <b>Appendix G-3: Screenshots of Phase Two Consultation website and virtual exhibition [EN010149/APP/5.2]</b>. The virtual exhibition</p>

Page	Section	SoCC Commitment	Detail
			<p>was accessed by 133 unique users through the consultation period.</p> <p>Given the nature of the targeted consultation, which included limited changes to the Order Limits to allow for highways improvements, a virtual exhibition was not employed as a consultation method. The approach to targeted consultation was agreed with the host authorities.</p>
14	4.8.1	<p><i>“We will hold in-person public events during the consultation period to enable anyone with an interest in the proposals to find out more about them and ask questions to members of the team. Printed copies of the consultation booklet, SoCC and questionnaire will be available at these events for members of the public to take away. Completed questionnaires will be able to be returned at the events.”</i></p>	<p>A total of six public events were held during the consultation period, above the five committed to in the SoCC due to an extra event held at RAF Digby.</p> <p>Public events were staffed by members of the project team, with printed copies of the consultation booklet, SoCC and questionnaire available at the events for members of the public to take away. Information about the Proposed Development was presented on exhibition boards, as well as a 3D model which enabled attendees to view indicative 3D visualisations of the Proposed Development from different locations around the proposed Site boundary. See <b>Chapter 5</b> of the <b>Consultation Report [EN010149/APP/5.1]</b> for more information about the public events.</p> <p>Given the nature of the targeted consultation, which included limited changes to the Order Limits to allow for highways improvements, public events were not employed as a</p>

Page	Section	SoCC Commitment	Detail
			consultation method. The approach to targeted consultation was agreed with the host authorities.
14	4.8.2	<i>“The events are being held in accessible venues around the proposed Springwell site and have been organised at a range of dates and times to ensure that people with different schedules are able to attend. This includes events after normal working hours as well as weekend events.”</i>	<p>The public events took place at the below times, dates and locations. All venues were chosen due to their proximity to the proposed Site boundary and in line with accessibility requirements to ensure that anyone with an interest in the proposals could attend. The Applicant welcomed 452 people over the six events.</p> <ul style="list-style-type: none"> <li>• Scopwick Village Hall, Brookside, Scopwick, LN4 3PA (Wednesday 24 January 4pm-8pm)</li> <li>• Ashby de la Launde Village Hall, Church Avenue, Ashby de la Launde, LN4 3JQ (Thursday 25 January 3pm-7pm)</li> <li>• The Venue, Grantham Road, Navenby, LN5 0JJ (Friday 26 January 12pm-4pm)</li> <li>• Metheringham Village Hall, Fen Road, Metheringham, LN4 3AA (Saturday 27 January 11am-3pm)</li> <li>• HIVE @ RAF Digby, Lincolnshire, LN4 3LH (Thursday 8 February, 3pm-7pm) (for personnel at RAF Digby)</li> <li>• Blankney Old School, Drury St, Blankney, LN4 3AZ (Tuesday 20 February 3pm-7pm)</li> </ul>
14	4.8.3	<i>“Details about the dates and times of the public events will be published on the project website and in the consultation newsletter and booklet. The schedule will</i>	<p>Details about the dates and times of the public events were published on the Springwell Solar Farm website, consultation booklet and within the consultation newsletter which was sent to all addresses within the inner zone on 11 January 2024.</p>

Page	Section	SoCC Commitment	Detail		
		<i>also be included on supporting publicity such as newspaper and social media adverts.”</i>	<p>They were also included in the letter advertising the launch of the SoCC which was sent to all addresses within the inner zone on 11 December 2023 and in supporting press releases, newspaper and social media adverts.</p> <p>Copies of the consultation materials and screenshots of the Springwell Solar Farm website can be found in <b>Appendix G-2: Phase Two Consultation materials and advertising</b> and <b>Appendix G-3: Screenshots of Phase Two Consultation website and virtual exhibition [EN010149/APP/5.2]</b>.</p>		
4.8.3		<i>“We will consider requests for additional events throughout the consultation period on a case-by-case basis. Any further events would be publicised on the project website, using social media adverts and if possible, at the venue.”</i>	<p>A total of six public events were held during the consultation period, above the five committed to in the SoCC due to an extra event held on RAF Digby for staff at RAF Digby. The Applicant supported RAF Digby to publicise the event on its internal communication channels and social media pages to publicise the event.</p> <p>Facebook advertising included the times, dates and locations of the public events. More detail is included in <b>paragraphs 5.7.12 to 5.7.14</b> of the <b>Consultation Report [EN010149/APP/5.1]</b>. Sample adverts, social media posts and the start of consultation press release can be found in <b>Appendix G-2.7</b> of the <b>Consultation Report [EN010149/APP/5.2]</b></p>		
15	Table 3	<p><b>Table 3: Public events</b></p> <table border="1"> <thead> <tr> <th>Location</th> <th>Date and times</th> </tr> </thead> </table>	Location	Date and times	Public events were carried out at the time, date and locations set out in Table 3 of the SoCC, along with an extra event at RAF
Location	Date and times				

Page	Section	SoCC Commitment	Detail
		<p>Scopwick Village Hall, Brookside, Scopwick, LN4 3PA</p> <p>Ashby de la Launde Village Hall, Church Avenue, Ashby de la Launde, LN4 3JQ</p> <p>The Venue, Grantham Road, Navenby, LN5 0JJ</p> <p>Metheringham Village Hall, Fen Road, Metheringham, LN4 3AA</p> <p>Blankney Old School, Drury St, Blankney, LN4 3AZ</p>	<p>Wednesday 24 January 4pm-8pm</p> <p>Thursday 25 January 3pm-7pm</p> <p>Friday 26 January 12pm-4pm</p> <p>Saturday 27 January 11am-3pm</p> <p>Tuesday 20 February 3pm-7pm</p> <p>Digby for personnel at RAF Digby which was confirmed after the SoCC was published. More detail about the public events can be found in <b>Chapter 5</b> of the <b>Consultation Report [EN010149/APP/5.1]</b>.</p>
15	4.9.1	<p><i>“We will seek to accommodate reasonable requests for presentations and briefings from stakeholder groups, for example: local authorities, parish councils, and local community groups, during the consultation period.”</i></p>	<p>The Applicant accommodated all requests for presentations, briefings, meetings and site visits during Phase Two Consultation. More information about activity carried out during the consultation can be found in <b>Chapter 5</b> of the <b>Consultation Report [EN010149/APP/5.1]</b>.</p> <p>The Applicant offered briefings on the Proposed Development to new land interests identified as part of the targeted consultation. The Applicant did not receive any requests for</p>

Page	Section	SoCC Commitment	Detail
			presentations, briefings, meetings or site visits during the targeted consultation period.
15	4.9.2	<i>“Other activities will be carried out, if considered necessary and appropriate, to engage specific interests or seldom heard groups. This could include, for example, further meetings with residents who are closest to the proposed site.”</i>	During Phase Two Consultation, the Applicant included an additional event at RAF Digby to take into account feedback that many people on the base do not leave RAF Digby. The Applicant additionally offered meetings on request to engage specific groups, including residents close to the proposed Site boundary. More information about activity carried out during the consultation can be found in <b>Chapter 5</b> of the <b>Consultation Report [EN010149/APP/5.1]</b> .
15	4.9.3	<i>“Details of all our consultation activity will be included in a Consultation Report which we will submit as part of our DCO application.”</i>	A <b>Consultation Report [EN010149/APP/5.1]</b> and its related appendices <b>[EN010149/APP/5.2]</b> form part of the DCO Application and set out how pre-application consultation (both statutory and non-statutory) was undertaken in the development of the Proposed Development.
15	4.10.1	<i>“We will publicise the consultation and associated activities in local media ahead of the start of the consultation period and will update local broadcast and print media channels on our activity during the consultation.”</i>	As required by section 48 of the PA 2008, the Applicant publicised the Phase Two Consultation in the following newspapers: <ul style="list-style-type: none"> <li>• Lincolnshire Echo</li> <li>• The Guardian</li> <li>• London Gazette</li> </ul> Copies of the notices as published are available in <b>Appendix I-1: Newspaper notices published in compliance with s48 of the PA 2008 [EN010149/APP/5.2]</b> . The section 48 notice was also published on the Springwell Solar Farm website (see



Page	Section	SoCC Commitment	Detail
			<p><b>Appendix G-3: Screenshots of Phase Two Consultation website and virtual exhibition [EN010149/APP/5.2]</b> and included in letters sent to prescribed consultees (see <b>Appendix F-1: Sample letters sent to consultees under s42(1)(a), (b) and (d) and non-prescribed consultees [EN010149/APP/5.2]</b>).</p> <p>The Applicant additionally sought to raise awareness of the consultation amongst the local communities using the following techniques:</p> <ul style="list-style-type: none"><li>• Issuing press releases to attract media coverage and raise awareness of the consultation at publication of SoCC on 11 December 2023 and at the start of consultation on 11 January 2024.</li><li>• Promotion of the consultation on the Springwell Solar Farm website and social media channels from 11 January to the end of the consultation period.</li><li>• Advertising in print versions of the Louth Leader and Lincolnshire Echo on 11 January 2024 and running a digital campaign between 11 January – 18 January 2024 which gained over 250,000 impressions.</li><li>• Advertising on Facebook and LinkedIn social media channels (described in <b>paragraphs 5.7.12 to 5.7.14</b> of the <b>Consultation Report [EN010149/APP/5.1]</b>).</li></ul>

Page	Section	SoCC Commitment	Detail
			<p>Sample adverts, social media posts and the start of consultation press release can be found in <b>Appendix G-2.7</b> of the <b>Consultation Report [EN010149/APP/5.2]</b></p> <p>The targeted consultation was limited to land interests and statutory consultees likely to have an interest in the changes to the Order Limits and highways improvements. A post setting out information about the targeted consultation was published on the Springwell Solar Farm website on Wednesday 17 July 2024. A screenshot of the page is provided at <b>Appendix K-2: Targeted consultation materials [EN010149/APP/5.2]</b>.</p>
15	4.10.2	<i>“Where publication timings allow, we will seek to use local newsletters to further engage with local communities.”</i>	<p>Details of the final consultation event were published in the February 2024 Heart of Lincs newsletter, which is produced by NKDC.</p>
15	4.10.3	<i>“Statutory notices will be published in line with Section 47 and Section 48 of the Planning Act.”</i>	<p>As required by section 47 of the PA 2008, the Applicant publicised the availability of the SoCC in the Lincolnshire Echo which appeared on Thursday 14 December 2024 (see <b>Appendix D-2: Section 47 notice [EN010149/APP/5.2]</b>).</p> <p>On 11 January 2024, four weeks after the SoCC was published, Phase Two Consultation began. As required by section 48 of the PA 2008, the Applicant publicised the Phase Two Consultation in the following newspapers:</p> <ul style="list-style-type: none"> <li>• Lincolnshire Echo</li> <li>• The Guardian</li> </ul>

Page	Section	SoCC Commitment	Detail
15	4.11.1	<p><i>“We will use social media to help publicise the consultation and encourage those with an interest in our proposals to get involved. We are unable to accept feedback via social media.”</i></p>	<ul style="list-style-type: none"> <li>• London Gazette</li> </ul> <p>Copies of the notices as published are available in <b>Appendix I-1: Newspaper notices published in compliance with s48 of the PA 2008 [EN010149/APP/5.2]</b>. The section 48 notice was also published on the Springwell Solar Farm website (see <b>Appendix G-3: Screenshots of Phase Two Consultation website and virtual exhibition [EN010149/APP/5.2]</b>) and included in letters sent to prescribed consultees (see <b>Appendix F-1: Sample letters sent to consultees under s42(1)(a), (b) and (d) and non-prescribed consultees [EN010149/APP/5.2]</b>).</p> <p>Given the nature of the targeted consultation, which included limited changes to the Order Limits to allow for highways improvements, it was not considered necessary for there to be a further round of section 48 notices.</p> <p>The Applicant used Facebook and LinkedIn to promote its consultation activity. On 11 January 2024, details of the consultation were published on EDF Renewables UK &amp; Ireland’s LinkedIn page (c. 87,000 followers).</p> <p>Facebook adverts ran from 11 January 2024 – 22 February 2024 and were targeted geographically to raise local awareness. Facebook adverts were run for users within the outer zone of consultation. More detail is included in <b>paragraphs 5.7.12 to 5.7.14 of the Consultation Report [EN010149/APP/5.1]</b>.</p>

Page	Section	SoCC Commitment	Detail
			<p>Sample adverts, social media posts and the start of consultation press release can be found in <b>Appendix G-2.7</b> of the <b>Consultation Report [EN010149/APP/5.2]</b>.</p> <p>Given the nature of the targeted consultation, which included limited changes to the Order Limits to allow for highways improvements, it was not considered necessary for there to be advertisements publicising the consultation on social media.</p>
16	4.12.1	<i>“To find out more information or request copies of the consultation materials, anyone can contact the consultation team by freephone (0800 038 3486) during normal business hours (Monday to Friday, 9am to 5:30pm). Outside of these hours, callers will be able to leave a message requesting a callback.”</i>	<p>The Applicant maintained a freephone line (0800 038 3486) throughout both Phase Two Consultation and its targeted consultation. It was available during normal business hours (Monday to Friday 9am to 5:30pm). Outside of these hours, callers could leave a message requesting a callback. If messages were left, the Applicant aimed to respond within 48 hours.</p> <p>Throughout Phase Two Consultation period, 11 calls were received, of which 2 were made out of hours and received a call back.</p> <p>Throughout targeted consultation, 3 calls were received.</p>
16	4.12.2	<i>“Alternatively, people can email info@springwellsolarfarm.co.uk or write to the team via Freepost (no stamp required): Springwell Solar Farm, FREEPOST SEC Newgate UK LOCAL.”</i>	<p>The email account was maintained and monitored throughout both consultation periods.</p> <p>Throughout Phase Two Consultation, 57 emails were received, which resulted in 9 copies of the consultation booklet and questionnaire being sent out.</p>

Page	Section	SoCC Commitment	Detail
			During the targeted consultation, 8 emails were received which resulted in 1 copy of the Phase Two Consultation booklet and questionnaire being sent out.
16	4.13.1	<i>“We will produce a questionnaire inviting feedback on different elements of the proposed Springwell Solar Farm. The questionnaire will be available to download on the project website: <a href="http://www.springwellsolarfarm.co.uk">www.springwellsolarfarm.co.uk</a>, in hard copy at public events, at deposit points around the local area and on request using the project contact details.”</i>	A consultation questionnaire was published as part of the consultation materials produced for Phase Two Consultation and was available to view and download online, in hard copy at the public events, at the deposit points and on request using the project contact details.
16	4.13.2	<i>“The completed hard-copy questionnaire can be returned using the Freepost address set out in this document during the consultation period, or at the public events.”</i>	Hard-copy questionnaires were accepted using the Freepost address at the public events. 11 hard copy questionnaires were returned at the public events, and 8 were returned through the Freepost address.
16	4.13.3	<i>“Respondents will also be able to complete the questionnaire online, which will be made available through the project website: <a href="http://www.springwellsolarfarm.co.uk">www.springwellsolarfarm.co.uk</a> as well as the virtual exhibition.”</i>	An online version of the consultation questionnaire could be filled on online, with the link available on the Springwell Solar Farm website and virtual exhibition and publicised on the consultation materials. The Applicant received 90 submissions using the online questionnaire by the end of the consultation period.
16	4.13.4	<i>“Alternatively, respondents can write to us via email or Freepost using the details set out in this document. All written feedback will be accepted.”</i>	The Applicant received 142 emails containing a consultation response by the end of the consultation period. The Applicant received 8 pieces of written feedback through the Freepost address by the end of the consultation period.

Page	Section	SoCC Commitment	Detail
16	4.14.1	<i>“It is important to ensure that everyone with an interest in the proposals has the opportunity to comment on our proposals as part of the consultation. We want our consultation to be inclusive and gather feedback from a wide range of audiences, including those who are seldom heard in public consultations such as people without internet access, seasonal workers, younger people and socially isolated people.”</i>	<p>The key outcomes of Phase Two Consultation highlight its success in ensuring that everyone with an interest in the Proposed Development had the opportunity to comment on them:</p> <ul style="list-style-type: none"> <li>• 248 responses received (11% higher than Phase One Consultation)</li> <li>• 11,835 letters sent to local homes and businesses</li> <li>• 452 people visited a public event (10.5% higher than Phase One Consultation)</li> <li>• 2,773 visitors to the Springwell Solar Farm website and 133 people visiting the virtual exhibition during the consultation period.</li> <li>• 15,989 users reached through Facebook advertising, with LinkedIn posts gaining 9,108 impressions.</li> <li>• 250,000 impressions achieved through digital campaigning in Lincolnshire Live, complemented by print advertising in local publications with a combined print circulation of over 4,000.</li> </ul> <p>The Applicant designed its consultation programme to ensure it was inclusive and accessible to people seldom heard in consultation activity, including:</p> <ul style="list-style-type: none"> <li>• Writing to local authorities and organisations representing seldom heard individuals and groups to ensure our</li> </ul>

Page	Section	SoCC Commitment	Detail
			<p>consultation activity and materials are appropriate and remove barriers to engagement.</p> <ul style="list-style-type: none"><li>• Choosing accessible venues for deposit points and public events.</li><li>• Publicising the consultation in digital editions of local newspapers and on social media.</li><li>• Holding public events at a variety of times, including evenings and weekends to enable participation by people with different time commitments.</li><li>• Making provision for people without internet access through the consultation programme. This included sending a consultation newsletter to every address within the inner zone, holding public events in the area, publicising the consultation in print editions of local newspapers and making hard copies of consultation materials available on-request and at deposit points.</li><li>• Providing materials in alternative formats on request (e.g. different languages, large-print or easy read). Contact details to request materials in alternative formats were published on the Springwell Solar Farm website, in the consultation booklet and newsletter.</li><li>• Writing to 40 organisations representing seldom heard individuals and groups in both the inner and outer zone at the start of consultation to support them in promoting the</li></ul>

Page	Section	SoCC Commitment	Detail
16	4.14.1	<i>“Writing to local authorities and organisations representing seldom heard individuals and groups to ensure our consultation activity and materials are appropriate and remove barriers to engagement.”</i>	<p>consultation through their own existing communication channels, such as social media feeds.</p> <ul style="list-style-type: none"> <li>• Contacting community and voluntary organisations including parish councils and schools within the inner zone to offer direct engagement.</li> <li>• Providing a variety of communication channels including a freephone number, email address and Freepost for those seeking further information</li> </ul> <p>More information about how the Applicant conducted its Phase Two Consultation is provided in <b>Chapter 5</b> of the <b>Consultation Report [EN010149/APP/5.1]</b>.</p> <p>The Applicant consulted the host authorities on the contents of the SoCC, including how it would engage seldom heard individuals and groups. The Applicant wrote to 40 gateway organisations to publicise the consultation and offer a briefing. A list of organisations contacted by the Applicant is available at <b>Appendix H-1: List of non-prescribed consultees and community organisations consulted during Phase Two Consultation [EN010149/APP/5.2]</b>.</p> <p>Following feedback from Phase One Consultation that people working at RAF Digby were unlikely to attend the public events, the Applicant additionally wrote to RAF Digby to organise an additional event on the base, which took place on 8 February 2024. No further suggestions for</p>



Page	Section	SoCC Commitment	Detail
			engagement of seldom heard individuals and groups were raised during Phase One or Phase Two Consultation periods.
16	4.14.1	<i>“Choosing accessible venues for deposit points and public events.”</i>	All venues chosen by the Applicant were screened to ensure they were accessible. The Applicant did not receive any feedback indicating that anyone was unable to access the public events because of accessibility requirements.
16	4.14.1	<i>“Publicising the consultation in digital editions of local newspapers and on social media.”</i>	<p>The Applicant ran a digital campaign on the website of Lincolnshire Live between 11 January – 18 January 2024 which gained over 250,000 impressions.</p> <p>The Applicant additionally used Facebook and LinkedIn to promote its consultation activity. On 11 January 2024, details of the consultation were published on EDF Renewables UK &amp; Ireland’s LinkedIn page (c. 87,000 followers) which received 4,574 impressions.</p> <p>Facebook adverts ran from 11 January 2024 – 22 February 2024 and were targeted geographically to raise local awareness. Facebook adverts were run for users within the outer zone of consultation. More detail is included in <b>paragraphs 5.7.12 to 5.7.14 of the Consultation Report [EN010149/APP/5.1]</b>.</p> <p>Sample adverts, social media posts and the start of consultation press release can be found in <b>Appendix G-2.7 of the Consultation Report [EN010149/APP/5.2]</b>.</p> <p>Given the nature of the targeted consultation, which included limited changes to the Order Limits to allow for highways improvements, it was not considered necessary for there to be</p>

Page	Section	SoCC Commitment	Detail
			advertisements publicising the consultation on social media or in local newspapers.
16	4.14.1	<i>“Holding public events at a variety of times, including evenings and weekends to enable participation by people with different time commitments.”</i>	<p>The Applicant held public events at a variety of times, including evenings, and dates, including weekends, to accommodate people with different time commitments. The Applicant welcomed 452 people to the six events it held over the consultation period. Details of the public events are included in <b>Chapter 5</b> of the <b>Consultation Report [EN010149/APP/5.1]</b>.</p> <p>Given the nature of the targeted consultation, which included limited changes to the Order Limits to allow for highways improvements, it was not considered necessary to hold public events.</p>
16	4.14.1	<i>“Making provision for people without internet access through the consultation programme. This includes sending a consultation newsletter to every address within the inner zone, holding public events in the area, publicising the consultation in print editions of local newspapers and making hard copies of consultation materials available on-request and at deposit points.”</i>	<p>The Applicant sent a letter publicising the availability of the SoCC and details of Phase Two Consultation, including the timings of the public events, to all addresses (c. 5,772) within the inner zone on 11 December 2023 (see <b>Appendix G-2.1: Phase Two Consultation launch letter [EN010149/APP/5.2]</b>). This was supplemented by a consultation newsletter on 11 January 2024 to publicise the start of the consultation period. The newsletter is provided at <b>Appendix G-2.2: Phase Two Consultation newsletter [EN010149/APP/5.2]</b>.</p> <p>As required by section 48 of the PA 2008, the Applicant publicised the Phase Two Consultation in the following newspapers:</p>

Page	Section	SoCC Commitment	Detail
			<ul style="list-style-type: none"><li>• Lincolnshire Echo</li><li>• The Guardian</li><li>• London Gazette</li></ul> <p>Copies of the notices as published are available in <b>Appendix I-1: Newspaper notices published in compliance with s48 of the PA 2008 [EN010149/APP/5.2]</b>. The section 48 notice was also published on the Springwell Solar Farm website (see <b>Appendix G-3: Screenshots of Phase Two Consultation website and virtual exhibition [EN010149/APP/5.2]</b>) and included in letters sent to prescribed consultees (see <b>Appendix F-1: Sample letters sent to consultees under s42(1)(a), (b) and (d) and non-prescribed consultees [EN010149/APP/5.2]</b>).</p> <p>This was supplemented by issuing press releases to attract media coverage and raise awareness of the consultation at publication of SoCC on 11 December 2023 and at the start of consultation on 11 January 2024 and advertising in print versions of the Louth Leader and Lincolnshire Reporter on 11 January 2024. Sample adverts and the start of consultation press release can be found in <b>Appendix G-2.7 of the Consultation Report [EN010149/APP/5.2]</b>.</p> <p>Given the nature of the targeted consultation, which included limited changes to the Order Limits to allow for highways improvements, it was not considered necessary to publicise the consultation.</p>

Page	Section	SoCC Commitment	Detail
17	4.14.1	<i>“Providing materials in alternative formats on request (e.g. different languages, large-print or easy read). Contact details to request materials in alternative formats will be published on the project website and in our consultation booklet and newsletter.”</i>	The Applicant did not receive any requests for materials to be provided in alternative formats within either consultation period.
17	4.14.1	<i>“Writing to identified organisations representing seldom heard individuals and groups in both the inner and outer zone at the start of consultation to support them in promoting the consultation through their own existing communication channels, such as social media feeds.”</i>	<p>The Applicant wrote to 40 community and voluntary organisations and 23 education providers within the inner and outer zone on 11 January 2024 inviting them to comment on the proposals, attend a public event and offered a briefing on the proposals. It also included a graphic which could be used to promote the consultation on their existing communication channels. A list of all the organisations contacted by the Applicant is available at <b>Appendix H-1: List of non-prescribed consultees and community organisations consulted during Phase Two Consultation [EN010149/APP/5.2]</b>.</p> <p>Given the nature of the targeted consultation, which included limited changes to the Order Limits to allow for highways improvements, it was not considered necessary to notify community and voluntary groups about the targeted consultations.</p>
17	4.14.1	<i>“Contacting community and voluntary organisations including parish councils and</i>	The Applicant wrote to 40 community and voluntary organisations and 23 education providers within the inner and outer zone on 11 January 2024 inviting them to comment on

Page	Section	SoCC Commitment	Detail
		<i>schools within the inner zone to offer direct engagement.”</i>	<p>the proposals, attend a public event and offered a briefing on the proposals. It also included a graphic which could be used to promote the consultation on their existing communication channels. A list of all the organisations contacted by the Applicant is available at <b>Appendix H-1: List of non-prescribed consultees and community organisations consulted during Phase Two Consultation [EN010149/APP/5.2]</b>.</p> <p>Given the nature of the targeted consultation, which included limited changes to the Order Limits to allow for highways improvements, it was not considered necessary to notify community and voluntary groups about the targeted consultations.</p>
17	4.14.1	<i>“Providing a variety of communication channels including a freephone number, email address and Freepost for those seeking further information.”</i>	The Applicant maintained project contact details through both stages of consultation, including a freephone (0800 038 3486), email address and Freepost (Springwell Solar Farm, SEC Newgate UK LOCAL). The Applicant recorded 68 interactions using these details throughout Phase Two Consultation and 11 interactions during targeted consultation.
18	5.1.1.	<p><i>“Anyone can find out more by:</i></p> <ul style="list-style-type: none"> <li><i>• Contacting us on 0800 038 3486 or info@springwellsolarfarm.co.uk or by writing to the Freepost address</i></li> </ul>	The Applicant maintained project contact details through both stages of consultation, including a freephone (0800 038 3486), email address and Freepost (Springwell Solar Farm, SEC Newgate UK LOCAL). The Applicant recorded 68 interactions

Page	Section	SoCC Commitment	Detail
		<p><i>(Springwell Solar Farm, FREEPOST SEC Newgate UK LOCAL).</i></p> <ul style="list-style-type: none"> <li>• <i>Attending a public event which we will hold in locations around the proposed Springwell site.</i></li> <li>• <i>Viewing the virtual exhibition on our website: <a href="http://www.springwellsolarfarm.co.uk">www.springwellsolarfarm.co.uk</a></i></li> <li>• <i>Reading the consultation booklet which will be available online or in hard copy on request, at deposit points around the area and at the public events.</i></li> <li>• <i>Reviewing the PEIR by going to <a href="http://www.springwellsolarfarm.co.uk">www.springwellsolarfarm.co.uk</a> or visiting a deposit point.”</i></li> </ul>	<p>using these details throughout Phase Two Consultation and 11 interactions during targeted consultation.</p> <p>The Applicant also held six public events throughout the consultation period and welcomed 452 attendees over the public events.</p> <p>The Applicant maintained a Springwell Solar Farm website which included all of the consultation materials which could be viewed and downloaded, and a link to the virtual exhibition. There were 1,090 click throughs to the Springwell Solar Farm website within the consultation period. The virtual exhibition was accessed by 133 unique users through the consultation period. Copies of the consultation documents were also available to view and take away at the deposit points which were maintained throughout the consultation period, as well as at the public events.</p>
18	5.2.1	<p><i>“We welcome feedback on our proposals for Springwell Solar Farm. Anyone can share their views by:</i></p> <ul style="list-style-type: none"> <li>• <i>Completing the consultation questionnaire online at <a href="http://www.springwellsolarfarm.co.uk">www.springwellsolarfarm.co.uk</a>.</i></li> <li>• <i>Returning a questionnaire by Freepost (no stamp required) to the following</i></li> </ul>	<p>Responses to the consultation could be submitted using any of these options during Phase Two Consultation. All consultation materials listed the methods which people could use to respond to the consultation.</p> <p>The Applicant invited comments on the targeted consultation in writing by email and Freepost, and did not produce a</p>

Page	Section	SoCC Commitment	Detail
		<p><i>address: Springwell Solar Farm, FREEPOST SEC Newgate UK LOCAL.</i></p> <ul style="list-style-type: none"> <li><i>Returning a questionnaire by email: info@springwellsolarfarm.co.uk.</i></li> <li><i>Submitting comments by email to info@springwellsolarfarm.co.uk or in writing to the above Freepost address.”</i></li> </ul>	<p>consultation questionnaire due to the limited nature of the proposed changes. New land interests identified by the Applicant were invited to share their feedback on the Proposed Development as presented during Phase Two Consultation and were able to request hard copies of the consultation questionnaire.</p>
18	5.2.2	<p><i>“Responses must be received by the consultation deadline of 23:59 on Thursday 22 February 2024.”</i></p>	<p>The Applicant accepted all feedback that was received by the Phase Two Consultation deadline of 23:59 on Thursday 22 February 2024. The Applicant also continued to accept any responses that were delivered after this date.</p>
18	5.2.3	<p><i>“Responses must be individual. Petitions will be treated as a single response for the purpose of the Consultation Report.”</i></p>	<p>The Applicant did not receive any petitions in response to either consultation period.</p>
18	5.3.1	<p><i>“Following this consultation, we will consider all of the feedback we receive as we continue refining our proposals for Springwell Solar Farm before submitting a DCO application.”</i></p>	<p>The Applicant has carefully considered all feedback received to Phase Two Consultation, as explained in <b>Chapters 5 and 6 of the Consultation Report [EN010149/APP/5.1]</b>.</p> <p>The Applicant has responded to feedback received to Phase Two Consultation in <b>Appendix J-1: Summary of Section 42(1)(a)(b) and (d) responses to Phase Two Consultation and consideration by topic</b> and <b>Appendix J-2: Summary of Section 47 responses to Phase Two Consultation and consideration by topic [EN010149/APP/5.2]</b>.</p>

Page	Section	SoCC Commitment	Detail
------	---------	-----------------	--------

The Applicant has carefully considered all feedback received to its targeted consultation, as explained in **Chapter 7** of the **Consultation Report [EN010149/APP/5.1]**. The Applicant has responded to feedback received to targeted consultation in **Appendix K-3: Summary of responses to targeted consultation and consideration by topic [EN010149/APP/5.2]**.





[springwellsolarfarm.co.uk](http://springwellsolarfarm.co.uk)